

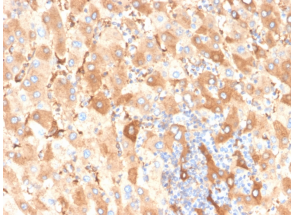
## Anti-Albumin Antibody [ALB/6409R] (A248505)

### Specifications:

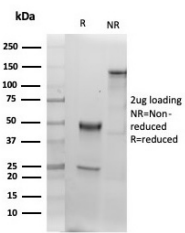
Name:	Anti-Albumin Antibody [ALB/6409R]
Description:	Recombinant rabbit monoclonal [ALB/6409R] antibody to Albumin.
Specificity:	This antibody is absolutely specific to albumin and does not show any significant cross-reaction with other human proteins. Albumin is a soluble, monomeric protein, which comprises about one half of the blood serum protein. Albumin functions primarily as a carrier protein for steroids, fatty acids, and thyroid hormones and plays a role in stabilizing extracellular fluid volume. Albumin is synthesized in the liver as prealbumin, which has an N-terminal peptide that is removed before the nascent protein is released from the rough endoplasmic reticulum. The product, prealbumin, is in turn cleaved in the Golgi vesicles to produce the secreted form of albumin.
Applications:	ELISA, WB, IHC-P
Recommended Dilutions:	WB: 1-2 µg/ml, IHC-P: 1-2 µg/ml
Reactivity:	Human
Immunogen:	Recombinant full-length human ALB protein.
Host:	Rabbit
Clonality:	Monoclonal
Clone ID:	ALB/6409R
Isotype:	IgG1
Light Chains:	kappa
Conjugate:	Unconjugated
Purification:	Protein A/G chromatography.
Concentration:	200 µg/ml
Product Form:	Liquid
Formulation:	Supplied in 10mM Phosphate Buffered Saline with 0.05% BSA and 0.05% Sodium Azide.
Storage:	Shipped at 4°C. Upon delivery aliquot and store at -20°C. Avoid freeze / thaw cycles.
General Notes:	This monoclonal antibody is also available in a different formulation without BSA and Sodium Azide - Anti-Albumin Antibody [ALB/6409R] - BSA and Azide free (A251687).
Disclaimer:	This product is for research use only. It is not intended for diagnostic or therapeutic use.

# Anti-Albumin Antibody [ALB/6409R] (A248505)

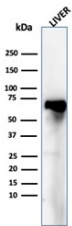
Images:



Immunohistochemical analysis of formalin-fixed, paraffin-embedded human liver carcinoma in colon using Anti-Albumin Antibody [ALB/6409R].



SDS-PAGE analysis of Anti-Albumin Antibody [ALB/6409R] under non-reduced and reduced conditions; showing intact IgG and intact heavy and light chains, respectively. SDS-PAGE analysis confirms the integrity and purity of the antibody.



Western blot analysis of human liver tissue lysate using Anti-Albumin Antibody [ALB/6409R].