

Anti-FAT1 Antibody [FAT1-3D7/1] (A248527)

Specifications:

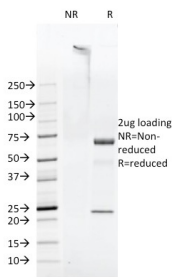
Name:	Anti-FAT1 Antibody [FAT1-3D7/1]
Description:	Mouse monoclonal [FAT1-3D7/1] antibody to FAT1.
Specificity:	The FAT proteins are members of the Cadherin superfamily homologous to the Drosophila Fat protein that functions as a positive regulator of planar cell polarity in the Drosophila wing. FAT1 is an unusual cadherin that controls cell growth and planar polarity while acting as a tumor suppressor. FAT1 is a proximal element of a signaling pathway that determines both cellular polarity in the plane of the monolayer and directed actin-dependent cell motility. FAT1 is localized at the leading edge of lamellipodia, filopodia and microspike tips where it directly interacts with Ena/VASP proteins to regulate the actin polymerization complex. When targeted to mitochondrial outer leaflets, the cytoplasmic domain of FAT1 recruits components of the actin polymerization machinery sufficient to induce ectopic actin polymerization. FAT1 expression in vascular smooth muscle cells (VSMCs) increases significantly after arterial injury or growth factor stimulation, implicating FAT1 in the control of VSMC functions central to vascular remodeling by facilitating migration and limiting proliferation. FAT1 is also involved in psychic disorders, and its action may be of patho-physiological importance.
Applications:	ELISA, WB, IF
Recommended Dilutions:	WB: 1-2 µg/ml, IF: 1-2 µg/ml
Reactivity:	Drosophila melanogaster
Cross Reactivity:	This antibody is predicted to cross-react with Chimpanzee and Rat due to sequence homology; 92% and 85% identity, respectively.
Immunogen:	Cytoplasmic domain of drosophila FAT protein.
Host:	Mouse
Clonality:	Monoclonal
Clone ID:	FAT1-3D7/1
Isotype:	IgM
Light Chains:	kappa
Conjugate:	Unconjugated
Purification:	Protein A/G chromatography.
Concentration:	200 µg/ml
Product Form:	Liquid

Anti-FAT1 Antibody [FAT1-3D7/1] (A248527)

Specifications continued:

Formulation:	Supplied in 10mM Phosphate Buffered Saline with 0.05% BSA and 0.05% Sodium Azide.
Storage:	Shipped at 4°C. Upon delivery aliquot and store at -20°C. Avoid freeze / thaw cycles.
General Notes:	This monoclonal antibody is also available in a different formulation without BSA and Sodium Azide - Anti-FAT1 Antibody [FAT1-3D7/1] - BSA and Azide free (A254301).
Disclaimer:	This product is for research use only. It is not intended for diagnostic or therapeutic use.

Images:



SDS-PAGE analysis of Anti-FAT1 Antibody [FAT1-3D7/1] under non-reduced and reduced conditions; showing intact IgG and intact heavy and light chains, respectively. SDS-PAGE analysis confirms the integrity and purity of the antibody.