

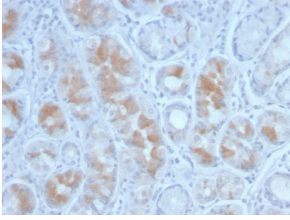
## Anti-Gastrin Antibody [GAST/2634] (A248659)

### Specifications:

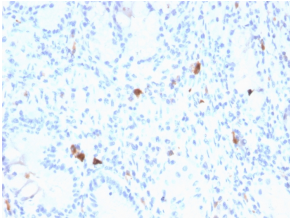
|                        |  |
|------------------------|--|
| Name:                  | Anti-Gastrin Antibody [GAST/2634]  |
| Description:           | Mouse monoclonal [GAST/2634] antibody to Gastrin.  |
| Applications:          | ELISA  |
| Recommended Dilutions: | ELISA: 1-5 µg/ml   |
| Reactivity:            | Human  |
| Immunogen:             | Recombinant full-length human GAST protein.  |
| Host:                  | Mouse  |
| Clonality:             | Monoclonal   |
| Clone ID:              | GAST/2634  |
| Isotype:               | IgG1   |
| Light Chains:          | kappa  |
| Conjugate:             | Unconjugated   |
| Purification:          | Protein A/G chromatography.  |
| Concentration:         | 200 µg/ml  |
| Product Form:          | Liquid   |
| Formulation:           | Supplied in 10mM Phosphate Buffered Saline with 0.05% BSA and 0.05% Sodium Azide.  |
| Storage:               | Shipped at 4°C. Upon delivery aliquot and store at -20°C. Avoid freeze / thaw cycles.  |
| General Notes:         | This monoclonal antibody is also available in a different formulation without BSA and Sodium Azide - Anti-Gastrin Antibody [GAST/2634] - BSA and Azide free (A251841). |
| Disclaimer:            | This product is for research use only. It is not intended for diagnostic or therapeutic use.   |

## Anti-Gastrin Antibody [GAST/2634] (A248659)

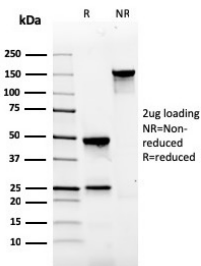
### Images:



Immunohistochemical analysis of formalin-fixed, paraffin-embedded human stomach using Anti-Gastrin Antibody [GAST/2634].



Immunohistochemical analysis of formalin-fixed, paraffin-embedded human stomach using Anti-Gastrin Antibody [GAST/2634].



SDS-PAGE analysis of Anti-Gastrin Antibody [GAST/2634] under non-reduced and reduced conditions; showing intact IgG and intact heavy and light chains, respectively. SDS-PAGE analysis confirms the integrity and purity of the antibody.