

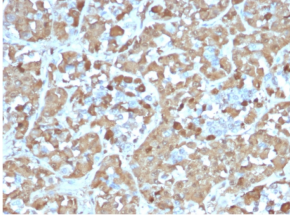
## Anti-Growth Hormone Antibody [rGH/1450] (A248716)

### Specifications:

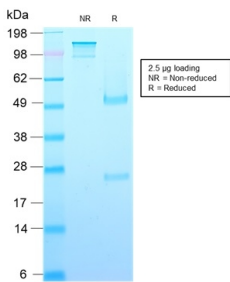
Name:	Anti-Growth Hormone Antibody [rGH/1450]
Description:	Recombinant mouse monoclonal [rGH/1450] antibody to Growth Hormone.
Applications:	IHC-P
Recommended Dilutions:	IHC-P: 1-2 µg/ml
Reactivity:	Human
Immunogen:	Recombinant fragment, within amino acids 58-187, of human Growth Hormone. The exact sequence is proprietary.
Host:	Mouse
Clonality:	Monoclonal
Clone ID:	rGH/1450
Isotype:	IgG1
Light Chains:	kappa
Conjugate:	Unconjugated
Purification:	Protein A/G chromatography.
Concentration:	200 µg/ml
Product Form:	Liquid
Formulation:	Supplied in 10mM Phosphate Buffered Saline with 0.05% BSA and 0.05% Sodium Azide.
Storage:	Shipped at 4°C. Upon delivery aliquot and store at -20°C. Avoid freeze / thaw cycles.
General Notes:	This monoclonal antibody is also available in a different formulation without BSA and Sodium Azide - Anti-Growth Hormone Antibody [rGH/1450] - BSA and Azide free (A251898).
Disclaimer:	This product is for research use only. It is not intended for diagnostic or therapeutic use.

## Anti-Growth Hormone Antibody [rGH/1450] (A248716)

### Images:



Immunohistochemical analysis of formalin-fixed, paraffin-embedded human pituitary using Anti-Growth Hormone Antibody [rGH/1450].



SDS-PAGE analysis of Anti-Growth Hormone Antibody [rGH/1450] under non-reduced and reduced conditions; showing intact IgG and intact heavy and light chains, respectively. SDS-PAGE analysis confirms the integrity and purity of the antibody.