

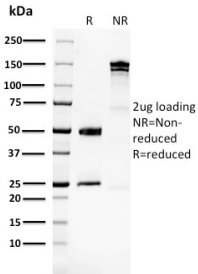
Anti-Glucose 6 Phosphate Isomerase Antibody [CPTC-GPI-1] (A248753)

Specifications:

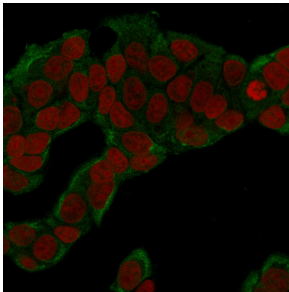
Name:	Anti-Glucose 6 Phosphate Isomerase Antibody [CPTC-GPI-1]
Description:	Mouse monoclonal [CPTC-GPI-1] antibody to Glucose 6 Phosphate Isomerase.
Applications:	WB, IF, IHC-P
Recommended Dilutions:	WB: 1-2 µg/ml, IF: 1-2 µg/ml, IHC-P: 1-2 µg/ml
Reactivity:	Human
Immunogen:	Recombinant full-length human GPI protein.
Host:	Mouse
Clonality:	Monoclonal
Clone ID:	CPTC-GPI-1
Isotype:	IgG2a
Light Chains:	kappa
Conjugate:	Unconjugated
Purification:	Protein A/G chromatography.
Concentration:	200 µg/ml
Product Form:	Liquid
Formulation:	Supplied in 10mM Phosphate Buffered Saline with 0.05% BSA and 0.05% Sodium Azide.
Storage:	Shipped at 4°C. Upon delivery aliquot and store at -20°C. Avoid freeze / thaw cycles.
General Notes:	This monoclonal antibody is also available in a different formulation without BSA and Sodium Azide - Anti-Glucose 6 Phosphate Isomerase Antibody [CPTC-GPI-1] - BSA and Azide free (A251933).
Disclaimer:	This product is for research use only. It is not intended for diagnostic or therapeutic use.

Anti-Glucose 6 Phosphate Isomerase Antibody [CPTC-GPI-1] (A248753)

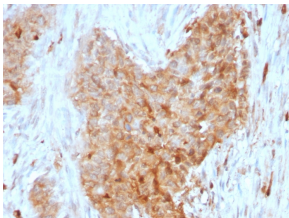
Images:



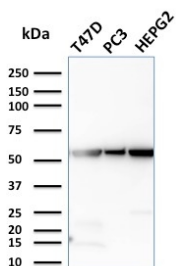
SDS-PAGE analysis of Anti-Glucose 6 Phosphate Isomerase Antibody [CPTC-GPI-1] under non-reduced and reduced conditions; showing intact IgG and intact heavy and light chains, respectively. SDS-PAGE analysis confirms the integrity and purity of the antibody.



Immunofluorescent analysis of MCF-7 cells stained with Anti-Glucose 6 Phosphate Isomerase Antibody [CPTC-GPI-1] followed by Goat Anti-Mouse IgG (CF® 488) (Green). The nuclear counterstain is RedDot (Red).



Immunohistochemical analysis of formalin-fixed, paraffin-embedded human breast carcinoma using Anti-Glucose 6 Phosphate Isomerase Antibody [CPTC-GPI-1].



Western blot analysis of T47D, PC3, and HePG2 cell lysates using Anti-Glucose 6 Phosphate Isomerase Antibody [CPTC-GPI-1].