

## Anti-Annexin A1 Antibody [ANXA1/1671] (A248812)

### Specifications:

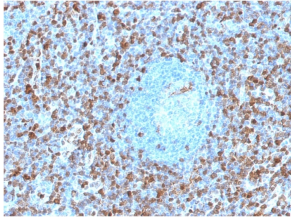
|                        |  |
|------------------------|--|
| Name:                  | Anti-Annexin A1 Antibody [ANXA1/1671]  |
| Description:           | Mouse monoclonal [ANXA1/1671] antibody to Annexin A1.  |
| Specificity:           | The ANXA1 gene belongs to the annexin family, and contains 4 annexin repeats. A pair of annexin repeats may form one binding site for calcium and a phospholipid. ANXA1 promotes membrane fusion and is involved in exocytosis. The gene for ANXA1 is upregulated in hairy cell leukemia (HCL), and its protein expression is specific for HCL. Detection of ANXA1 provides a simple, highly sensitive and specific assay for diagnosing HCL. Annexin A1 has also been found to be protective against DNA damage induced by heat in breast cancer cells, suggesting it is involved in tumor suppressive and protective activities, and also is associated with treatment resistance. |
| Applications:          | Flow Cytometry, WB, IF, IHC-P  |
| Recommended Dilutions: | Flow Cytometry: 1-2 µg/million cells, WB: 1-2 µg/ml, IF: 2-4 µg/ml, IHC-Fr: 1-2 µg/ml  |
| Reactivity:            | Human  |
| Immunogen:             | Recombinant full-length human Annexin A1 protein.  |
| Host:                  | Mouse  |
| Clonality:             | Monoclonal   |
| Clone ID:              | ANXA1/1671   |
| Isotype:               | IgG2b  |
| Light Chains:          | kappa  |
| Conjugate:             | Unconjugated   |
| Purification:          | Protein A/G chromatography.  |
| Concentration:         | 200 µg/ml  |
| Product Form:          | Liquid   |
| Formulation:           | Supplied in 10mM Phosphate Buffered Saline with 0.05% BSA and 0.05% Sodium Azide.  |
| Storage:               | Shipped at 4°C. Upon delivery aliquot and store at -20°C. Avoid freeze / thaw cycles.  |
| General Notes:         | This monoclonal antibody is also available in a different formulation without BSA and Sodium Azide - Anti-Annexin A1 Antibody [ANXA1/1671] - BSA and Azide free (A251992).   |

# Anti-Annexin A1 Antibody [ANXA1/1671] (A248812)

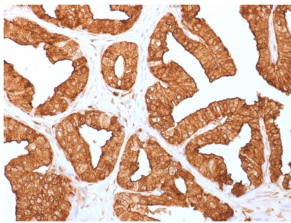
## Specifications continued:

**Disclaimer:** This product is for research use only. It is not intended for diagnostic or therapeutic use.

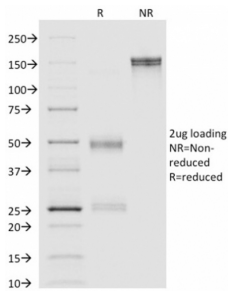
## Images:



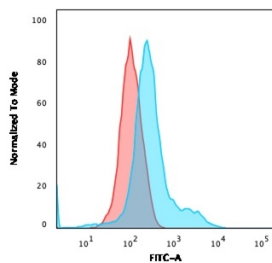
Immunohistochemical analysis of formalin-fixed, paraffin-embedded human spleen tissue using Anti-Annexin A1 Antibody [ANXA1/1671].



Immunohistochemical analysis of formalin-fixed, paraffin-embedded human prostate tissue using Anti-Annexin A1 Antibody [ANXA1/1671].



SDS-PAGE analysis of Anti-Annexin A1 Antibody [ANXA1/1671] under non-reduced and reduced conditions; showing intact IgG and intact heavy and light chains, respectively. SDS-PAGE analysis confirms the integrity and purity of the antibody.



Flow cytometric analysis of PFA fixed HeLa cells using Anti-Annexin A1 Antibody [ANXA1/1671] followed by Goat Anti-Mouse IgG (CF® 488) (Blue). Isotype Control (Red).