

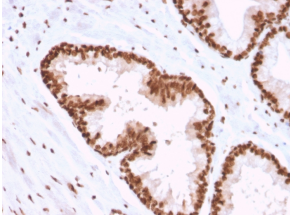
Anti-APE1 Antibody [CPTC-APEX1-2] (A248871)

Specifications:

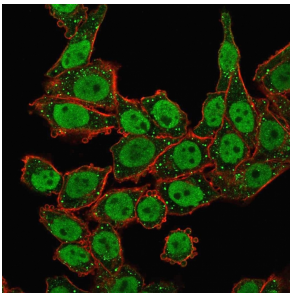
Name:	Anti-APE1 Antibody [CPTC-APEX1-2]
Description:	Mouse monoclonal [CPTC-APEX1-2] antibody to APE1.
Applications:	Flow Cytometry, IF, WB, IHC-P
Recommended Dilutions:	Flow Cytometry: 1-2 µg/million cells, IF: 1-2 µg/ml, WB: 1-2 µg/ml, IHC-P: 1-2 µg/ml
Reactivity:	Human
Immunogen:	Recombinant full-length human APEX1 protein.
Host:	Mouse
Clonality:	Monoclonal
Clone ID:	CPTC-APEX1-2
Isotype:	IgG1
Light Chains:	kappa
Conjugate:	Unconjugated
Purification:	Protein A/G chromatography.
Concentration:	200 µg/ml
Product Form:	Liquid
Formulation:	Supplied in 10mM Phosphate Buffered Saline with 0.05% BSA and 0.05% Sodium Azide.
Storage:	Shipped at 4°C. Upon delivery aliquot and store at -20°C. Avoid freeze / thaw cycles.
General Notes:	This monoclonal antibody is also available in a different formulation without BSA and Sodium Azide - Anti-APE1 Antibody [CPTC-APEX1-2] - BSA and Azide free (A252051).
Disclaimer:	This product is for research use only. It is not intended for diagnostic or therapeutic use.

Anti-APE1 Antibody [CPTC-APEX1-2] (A248871)

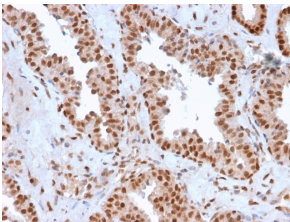
Images:



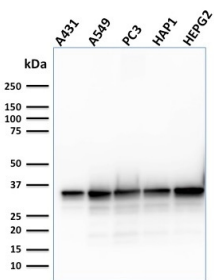
Immunohistochemical analysis of formalin-fixed, paraffin-embedded human prostate carcinoma using Anti-APE1 Antibody [CPTC-APEX1-2].



Immunofluorescent analysis of HeLa cells stained with Anti-APE1 Antibody [CPTC-APEX1-2] followed by Goat Anti-Mouse IgG (CF® 488) (Green). Membrane is stained with Phalloidin-CF® 640.



Immunohistochemical analysis of formalin-fixed, paraffin-embedded human prostate carcinoma using Anti-APE1 Antibody [CPTC-APEX1-2].



Western blot analysis of human A431, A549, PC3, HAP1, and HePG2 cell lysates using Anti-APE1 Antibody [CPTC-APEX1-2].