

Anti-Kappa Light Chain Antibody [L1C1] (A248975)

Specifications:

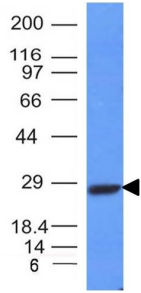
Name:	Anti-Kappa Light Chain Antibody [L1C1]
Description:	Mouse monoclonal [L1C1] antibody to Kappa Light Chain.
Specificity:	This antibody is specific to kappa light chain of immunoglobulin and shows no cross-reaction with lambda light chain or any of the five heavy chains. In mammals, the two light chains in an antibody are always identical, with only one type of light chain, kappa or lambda. The ratio of kappa to lambda is 70:30. However, with the occurrence of multiple myeloma or other B-cell malignancies this ratio is disturbed. Antibody to the kappa light chain is reportedly useful in the identification of leukemias, plasmacytomas, and certain non-Hodgkins lymphomas. Demonstration of clonality in lymphoid infiltrates indicates that the infiltrate is malignant.
Applications:	WB, IHC-P
Recommended Dilutions:	WB: 1-2 µg/ml, IHC-P: 1-2 µg/ml
Reactivity:	Human
Cross Reactivity:	This antibody does not cross react with Rat.
Immunogen:	Human B-lymphoma Cells.
Host:	Mouse
Clonality:	Monoclonal
Clone ID:	L1C1
Isotype:	IgG1
Light Chains:	kappa
Conjugate:	Unconjugated
Purification:	Protein A/G chromatography.
Concentration:	200 µg/ml
Product Form:	Liquid
Formulation:	Supplied in 10mM Phosphate Buffered Saline with 0.05% BSA and 0.05% Sodium Azide.
Storage:	Shipped at 4°C. Upon delivery aliquot and store at -20°C. Avoid freeze / thaw cycles.
General Notes:	This monoclonal antibody is also available in a different formulation without BSA and Sodium Azide - Anti-Kappa Light Chain Antibody [L1C1] - BSA and Azide free (A252155).

Anti-Kappa Light Chain Antibody [L1C1] (A248975)

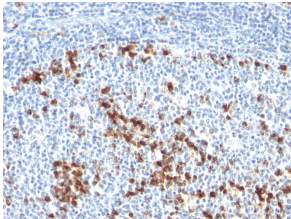
Specifications continued:

Disclaimer: This product is for research use only. It is not intended for diagnostic or therapeutic use.

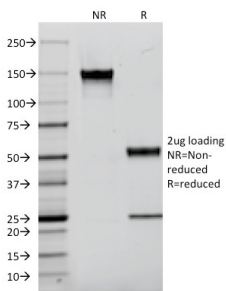
Images:



Western blot analysis of Raji cell lysate using Anti-Kappa Light Chain Antibody [L1C1].



Immunohistochemical analysis of formalin-fixed, paraffin-embedded human tonsil using Anti-Kappa Light Chain Antibody [L1C1].



SDS-PAGE analysis of Anti-Kappa Light Chain Antibody [L1C1] under non-reduced and reduced conditions; showing intact IgG and intact heavy and light chains, respectively. SDS-PAGE analysis confirms the integrity and purity of the antibody.