

Anti-Insulin Receptor alpha Antibody [INSR/2277R] (A249047)

Specifications:

Name:	Anti-Insulin Receptor alpha Antibody [INSR/2277R]
Description:	Recombinant rabbit monoclonal [INSR/2277R] antibody to Insulin Receptor alpha.
Specificity:	The insulin receptor (INSR) is a heterodimeric protein complex that has an intracellular subunit, which is disulfide-linked to a transmembrane segment. The insulin ligand binds to the INSR and initiates molecular signaling pathways that promote glucose uptake in cells and glycogen synthesis. Insulin binding to INSR induces phosphorylation of intra-cellular tyrosine kinase domains and recruitment of multiple SH2 and SH3 domain-containing intracellular proteins that serve as signaling intermediates for pleiotropic effects of insulin. Type 1 diabetes is an autoimmune condition of the endocrine pancreas that results in destruction of insulin secreting cells and a progressive loss in insulin-sensitive glucose uptake by cells.
Applications:	IHC-P
Recommended Dilutions:	IHC-P: 1-2 µg/ml
Reactivity:	Human
Immunogen:	Recombinant fragment from the extracellular domain of human Insulin Receptor alpha. The exact sequence is proprietary.
Host:	Rabbit
Clonality:	Monoclonal
Clone ID:	INSR/2277R
Isotype:	IgG
Conjugate:	Unconjugated
Purification:	Protein A/G chromatography.
Concentration:	200 µg/ml
Product Form:	Liquid
Formulation:	Supplied in 10mM Phosphate Buffered Saline with 0.05% BSA and 0.05% Sodium Azide.
Storage:	Shipped at 4°C. Upon delivery aliquot and store at -20°C. Avoid freeze / thaw cycles.
General Notes:	This monoclonal antibody is also available in a different formulation without BSA and Sodium Azide - Anti-Insulin Receptor alpha Antibody [INSR/2277R] - BSA and Azide free (A252227).

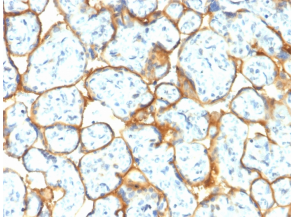
Anti-Insulin Receptor alpha Antibody [INSR/2277R] (A249047)

Specifications continued:

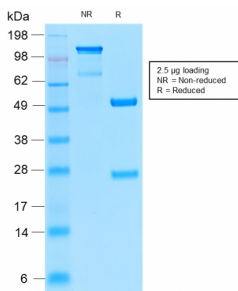
Disclaimer:

This product is for research use only. It is not intended for diagnostic or therapeutic use.

Images:



Immunohistochemical analysis of formalin-fixed, paraffin-embedded human placenta using Anti-Insulin Receptor alpha Antibody [INSR/2277R].



SDS-PAGE analysis of Anti-Insulin Receptor alpha Antibody [INSR/2277R] under non-reduced and reduced conditions; showing intact IgG and intact heavy and light chains, respectively. SDS-PAGE analysis confirms the integrity and purity of the antibody.