

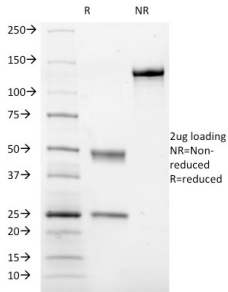
## Anti-CD41a Antibody [ITGA2B/1036] (A249052)

### Specifications:

Name:	Anti-CD41a Antibody [ITGA2B/1036]
Description:	Mouse monoclonal [ITGA2B/1036] antibody to CD41a.
Applications:	Flow Cytometry, IF
Recommended Dilutions:	Flow Cytometry: 1-2 µg/million cells, IF: 1-2 µg/ml
Reactivity:	Human
Immunogen:	Recombinant full-length human Integrin alpha IIb protein.
Host:	Mouse
Clonality:	Monoclonal
Clone ID:	ITGA2B/1036
Isotype:	IgG1
Light Chains:	kappa
Conjugate:	Unconjugated
Purification:	Protein A/G chromatography.
Concentration:	200 µg/ml
Product Form:	Liquid
Formulation:	Supplied in 10mM Phosphate Buffered Saline with 0.05% BSA and 0.05% Sodium Azide.
Storage:	Shipped at 4°C. Upon delivery aliquot and store at -20°C. Avoid freeze / thaw cycles.
General Notes:	This monoclonal antibody is also available in a different formulation without BSA and Sodium Azide - Anti-CD41a Antibody [ITGA2B/1036] - BSA and Azide free (A252232).
Disclaimer:	This product is for research use only. It is not intended for diagnostic or therapeutic use.

## Anti-CD41a Antibody [ITGA2B/1036] (A249052)

### Images:



SDS-PAGE analysis of Anti-CD41a Antibody [ITGA2B/1036] under non-reduced and reduced conditions; showing intact IgG and intact heavy and light chains, respectively. SDS-PAGE analysis confirms the integrity and purity of the antibody.