

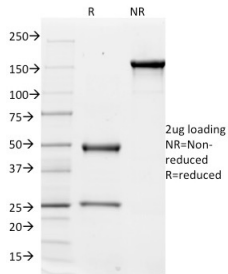
## Anti-Integrin alpha V Antibody [ITGAV/1610] (A249070)

### Specifications:

Name:	Anti-Integrin alpha V Antibody [ITGAV/1610]
Description:	Mouse monoclonal [ITGAV/1610] antibody to Integrin alpha V.
Applications:	ELISA, Flow Cytometry, IF, WB
Recommended Dilutions:	ELISA: 1-5 µg/ml, Flow Cytometry: 1-2 µg/million cells, IF: 1-2 µg/ml, WB: 1-2 µg/ml
Reactivity:	Human
Immunogen:	Recombinant full-length human Integrin alpha V beta 1 protein.
Host:	Mouse
Clonality:	Monoclonal
Clone ID:	ITGAV/1610
Isotype:	IgG1
Light Chains:	kappa
Conjugate:	Unconjugated
Purification:	Protein A/G chromatography.
Concentration:	200 µg/ml
Product Form:	Liquid
Formulation:	Supplied in 10mM Phosphate Buffered Saline with 0.05% BSA and 0.05% Sodium Azide.
Storage:	Shipped at 4°C. Upon delivery aliquot and store at -20°C. Avoid freeze / thaw cycles.
General Notes:	This monoclonal antibody is also available in a different formulation without BSA and Sodium Azide - Anti-Integrin alpha V Antibody [ITGAV/1610] - BSA and Azide free (A252250).
Disclaimer:	This product is for research use only. It is not intended for diagnostic or therapeutic use.

## Anti-Integrin alpha V Antibody [ITGAV/1610] (A249070)

### Images:



SDS-PAGE analysis of Anti-Integrin alpha V Antibody [ITGAV/1610] under non-reduced and reduced conditions; showing intact IgG and intact heavy and light chains, respectively. SDS-PAGE analysis confirms the integrity and purity of the antibody.