

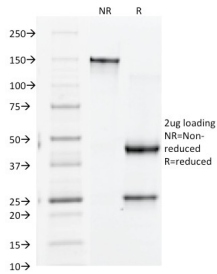
## Anti-Integrin beta 3 Antibody [Y2/51] (A249079)

### Specifications:

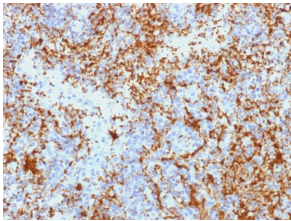
Name:	Anti-Integrin beta 3 Antibody [Y2/51]
Description:	Mouse monoclonal [Y2/51] antibody to Integrin beta 3.
Specificity:	This antibody is useful for classification of megakaryoblastic leukemia.
Applications:	Flow Cytometry, IF, IHC
Recommended Dilutions:	Flow Cytometry: 0.5-1 µg/million cells, IF: 1-2 µg/ml, IHC: 1-2 µg/ml
Reactivity:	Human
Immunogen:	Phytohemagglutinin (PHA)-stimulated peripheral blood cells.
Host:	Mouse
Clonality:	Monoclonal
Clone ID:	Y2/51
Isotype:	IgG1
Light Chains:	kappa
Conjugate:	Unconjugated
Purification:	Protein A/G chromatography.
Concentration:	200 µg/ml
Product Form:	Liquid
Formulation:	Supplied in 10mM Phosphate Buffered Saline with 0.05% BSA and 0.05% Sodium Azide.
Storage:	Shipped at 4°C. Upon delivery aliquot and store at -20°C. Avoid freeze / thaw cycles.
General Notes:	This monoclonal antibody is also available in a different formulation without BSA and Sodium Azide - Anti-Integrin beta 3 Antibody [Y2/51] - BSA and Azide free (A252259).
Disclaimer:	This product is for research use only. It is not intended for diagnostic or therapeutic use.

## Anti-Integrin beta 3 Antibody [Y2/51] (A249079)

### Images:



SDS-PAGE analysis of Anti-Integrin beta 3 Antibody [Y2/51] under non-reduced and reduced conditions; showing intact IgG and intact heavy and light chains, respectively. SDS-PAGE analysis confirms the integrity and purity of the antibody.



Immunohistochemical analysis of formalin-fixed, paraffin-embedded human spleen using Anti-Integrin beta 3 Antibody [Y2/51].