

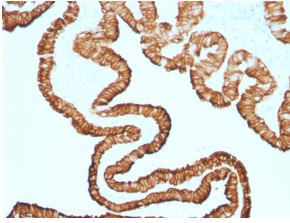
Anti-Cytokeratin 7 Antibody [KRT7/1499R] (A249143)

Specifications:

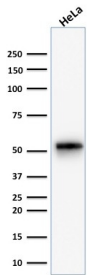
Name:	Anti-Cytokeratin 7 Antibody [KRT7/1499R]
Description:	Recombinant rabbit monoclonal [KRT7/1499R] antibody to Cytokeratin 7.
Specificity:	This antibody is highly specific to Cytokeratin 7 and shows no cross-reaction with other intermediate filament proteins.
Applications:	Flow Cytometry, WB, IHC-P
Recommended Dilutions:	Flow Cytometry: 1-2 µg/million cells, WB: 1-2 µg/ml, IHC-P: 1-2 µg/ml
Reactivity:	Human
Immunogen:	Recombinant full-length human KRT7 protein.
Host:	Rabbit
Clonality:	Monoclonal
Clone ID:	KRT7/1499R
Isotype:	IgG
Conjugate:	Unconjugated
Purification:	Protein A chromatography.
Concentration:	200 µg/ml
Product Form:	Liquid
Formulation:	Supplied in 10mM Phosphate Buffered Saline with 0.05% BSA and 0.05% Sodium Azide.
Storage:	Shipped at 4°C. Upon delivery aliquot and store at -20°C. Avoid freeze / thaw cycles.
General Notes:	This monoclonal antibody is also available in a different formulation without BSA and Sodium Azide - Anti-Cytokeratin 7 Antibody [KRT7/1499R] - BSA and Azide free (A252323).
Disclaimer:	This product is for research use only. It is not intended for diagnostic or therapeutic use.

Anti-Cytokeratin 7 Antibody [KRT7/1499R] (A249143)

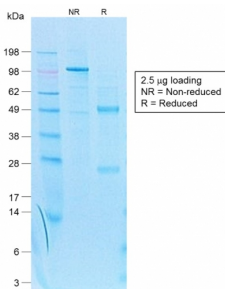
Images:



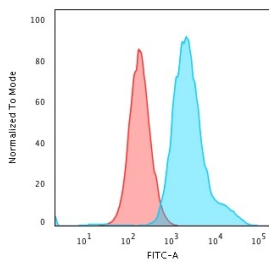
Immunohistochemical analysis of formalin-fixed, paraffin-embedded human oviduct using Anti-Cytokeratin 7 Antibody [KRT7/1499R].



Western blot analysis of human HeLa cell lysate using Anti-Cytokeratin 7 Antibody [KRT7/1499R].



SDS-PAGE analysis of Anti-Cytokeratin 7 Antibody [KRT7/1499R] under non-reduced and reduced conditions; showing intact IgG and intact heavy and light chains, respectively. SDS-PAGE analysis confirms the integrity and purity of the antibody.



Flow cytometric analysis of PFA fixed HeLa cells using Anti-Cytokeratin 7 Antibody [KRT7/1499R] followed by Goat Anti-Rabbit IgG (CF® 488) (Blue). Isotype Control (Red).