

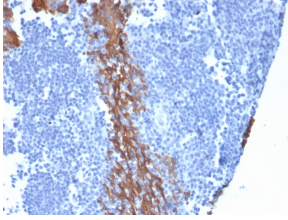
Anti-Cytokeratin 13 Antibody [KRT13/2659] (A249171)

Specifications:

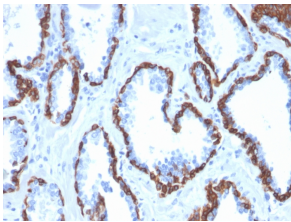
Name:	Anti-Cytokeratin 13 Antibody [KRT13/2659]
Description:	Mouse monoclonal [KRT13/2659] antibody to Cytokeratin 13.
Applications:	IF, Flow Cytometry, IHC-P
Recommended Dilutions:	IF: 1-2 µg/ml, Flow Cytometry: 1-2 µg/million cells, IHC-P: 1-2 µg/ml
Reactivity:	Human
Immunogen:	Recombinant full-length human KRT13 protein.
Host:	Mouse
Clonality:	Monoclonal
Clone ID:	KRT13/2659
Isotype:	IgG1
Light Chains:	kappa
Conjugate:	Unconjugated
Purification:	Protein A/G chromatography.
Concentration:	200 µg/ml
Product Form:	Liquid
Formulation:	Supplied in 10mM Phosphate Buffered Saline with 0.05% BSA and 0.05% Sodium Azide.
Storage:	Shipped at 4°C. Upon delivery aliquot and store at -20°C. Avoid freeze / thaw cycles.
General Notes:	This monoclonal antibody is also available in a different formulation without BSA and Sodium Azide - Anti-Cytokeratin 13 Antibody [KRT13/2659] - BSA and Azide free (A252351).
Disclaimer:	This product is for research use only. It is not intended for diagnostic or therapeutic use.

Anti-Cytokeratin 13 Antibody [KRT13/2659] (A249171)

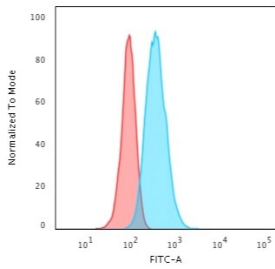
Images:



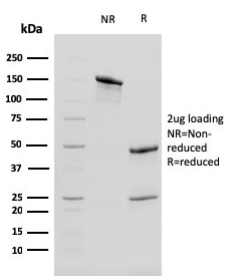
Immunohistochemical analysis of formalin-fixed, paraffin-embedded human tonsil using Anti-Cytokeratin 13 Antibody [KRT13/2659].



Immunohistochemical analysis of formalin-fixed, paraffin-embedded human prostate carcinoma using Anti-Cytokeratin 13 Antibody [KRT13/2659].



Flow cytometric analysis of HeLa cells using Anti-Cytokeratin 13 Antibody [KRT13/2659] followed by Goat Anti-Mouse IgG (CF® 488) (Blue). Isotype Control (Red).



SDS-PAGE analysis of Anti-Cytokeratin 13 Antibody [KRT13/2659] under non-reduced and reduced conditions; showing intact IgG and intact heavy and light chains, respectively. SDS-PAGE analysis confirms the integrity and purity of the antibody.