

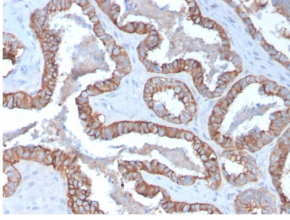
Anti-Cytokeratin 15 Antibody [KRT15/2957] (A249180)

Specifications:

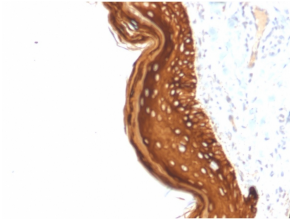
Name:	Anti-Cytokeratin 15 Antibody [KRT15/2957]
Description:	Mouse monoclonal [KRT15/2957] antibody to Cytokeratin 15.
Applications:	Flow Cytometry, IF, WB, IHC-P
Recommended Dilutions:	Flow Cytometry: 1-2 µg/million cells, IF: 1-2 µg/ml, WB: 1-2 µg/ml, IHC-P: 1-2 µg/ml
Reactivity:	Human
Immunogen:	Recombinant full-length human KRT15 protein.
Host:	Mouse
Clonality:	Monoclonal
Clone ID:	KRT15/2957
Isotype:	IgG2c
Light Chains:	kappa
Conjugate:	Unconjugated
Purification:	Protein A/G chromatography.
Concentration:	200 µg/ml
Product Form:	Liquid
Formulation:	Supplied in 10mM Phosphate Buffered Saline with 0.05% BSA and 0.05% Sodium Azide.
Storage:	Shipped at 4°C. Upon delivery aliquot and store at -20°C. Avoid freeze / thaw cycles.
General Notes:	This monoclonal antibody is also available in a different formulation without BSA and Sodium Azide - Anti-Cytokeratin 15 Antibody [KRT15/2957] - BSA and Azide free (A252360).
Disclaimer:	This product is for research use only. It is not intended for diagnostic or therapeutic use.

Anti-Cytokeratin 15 Antibody [KRT15/2957] (A249180)

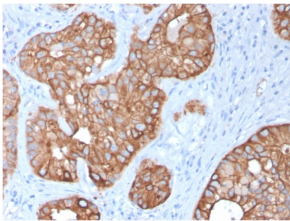
Images:



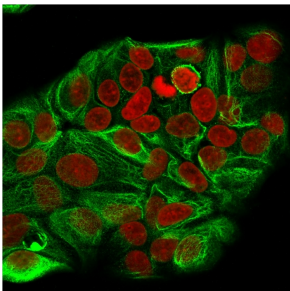
Immunohistochemical analysis of formalin-fixed, paraffin-embedded human prostate carcinoma using Anti-Cytokeratin 15 Antibody [KRT15/2957].



Immunohistochemical analysis of formalin-fixed, paraffin-embedded human basal cell carcinoma using Anti-Cytokeratin 15 Antibody [KRT15/2957].



Immunohistochemical analysis of formalin-fixed, paraffin-embedded human colon carcinoma using Anti-Cytokeratin 15 Antibody [KRT15/2957].



Immunofluorescent analysis of methanol fixed MCF-7 cells stained with Anti-Cytokeratin 15 Antibody [KRT15/2957] followed by Goat Anti-Mouse IgG (CF® 488) (Green). The nuclear counterstain is RedDot (Red).