

## Anti-Cytokeratin 19 Antibody [A53-B/A2.26] (A249208)

### Specifications:

Name:	Anti-Cytokeratin 19 Antibody [A53-B/A2.26]
Description:	Mouse monoclonal [A53-B/A2.26] antibody to Cytokeratin 19.
Specificity:	This antibody reacts with the rod domain of human cytokeratin-19 (CK19), a polypeptide of 40kDa. Its epitope maps between amino acid 312-335. CK19 is expressed in sweat gland, mammary gland ductal and secretory cells, bile ducts, gastrointestinal tract, bladder urothelium, oral epithelia, esophagus, and ectocervical epithelium. Anti-CK19 reacts with a wide variety of epithelial malignancies including adenocarcinomas of the colon, stomach, pancreas, biliary tract, liver, and breast. Perhaps the most useful application is the identification of thyroid carcinoma of the papillary type, although 50%-60% of follicular carcinomas are also labeled. Anti-CK19 is a useful marker for detection of tumor cells in lymph nodes, peripheral blood, bone marrow and breast cancer.
Applications:	Flow Cytometry, IF, WB, IHC-P
Recommended Dilutions:	Flow Cytometry: 0.5-1 µg/million cells, IF: 1-2 µg/ml, WB: 1-2 µg/ml, IHC-P: 1-2 µg/ml
Reactivity:	Human
Cross Reactivity:	This antibody does not cross react with Rat or Ferret.
Immunogen:	Human breast cancer MCF-7 cells.
Host:	Mouse
Clonality:	Monoclonal
Clone ID:	A53-B/A2.26
Isotype:	IgG2a
Light Chains:	lambda
Conjugate:	Unconjugated
Purification:	Protein A/G chromatography.
Concentration:	200 µg/ml
Product Form:	Liquid
Formulation:	Supplied in 10mM Phosphate Buffered Saline with 0.05% BSA and 0.05% Sodium Azide.
Storage:	Shipped at 4°C. Upon delivery aliquot and store at -20°C. Avoid freeze / thaw cycles.

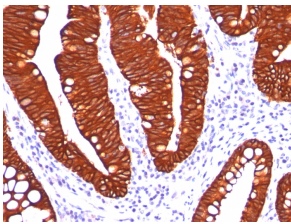
# Anti-Cytokeratin 19 Antibody [A53-B/A2.26] (A249208)

## Specifications continued:

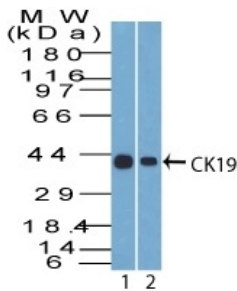
**General Notes:** This monoclonal antibody is also available in a different formulation without BSA and Sodium Azide - Anti-Cytokeratin 19 Antibody [A53-B/A2.26] - BSA and Azide free (A252388).

**Disclaimer:** This product is for research use only. It is not intended for diagnostic or therapeutic use.

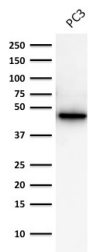
## Images:



Immunohistochemical analysis of formalin-fixed, paraffin-embedded colon carcinoma using Anti-Cytokeratin 19 Antibody [A53-B/A2.26].



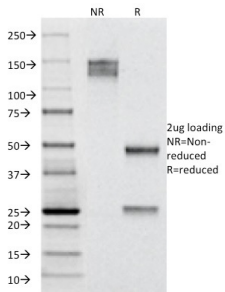
Western blot analysis of (Lane 1) Hep-G2 and (Lane 2) MCF-7 cell lysates using Anti-Cytokeratin 19 Antibody [A53-B/A2.26].



Western blot analysis of human prostate cancer PC-3 cell lysate using Anti-Cytokeratin 19 Antibody [A53-B/A2.26].

## Anti-Cytokeratin 19 Antibody [A53-B/A2.26] (A249208)

Images continued:



SDS-PAGE analysis of Anti-Cytokeratin 19 Antibody [A53-B/A2.26] under non-reduced and reduced conditions; showing intact IgG and intact heavy and light chains, respectively. SDS-PAGE analysis confirms the integrity and purity of the antibody.