

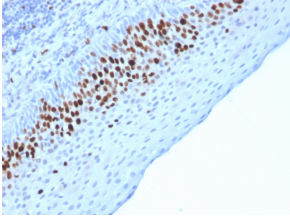
## Anti-Ki67 Antibody [MKI67/2463] (A249346)

### Specifications:

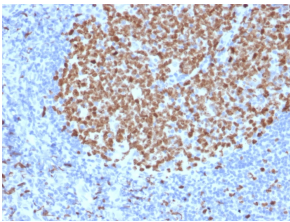
Name:	Anti-Ki67 Antibody [MKI67/2463]
Description:	Mouse monoclonal [MKI67/2463] antibody to Ki67.
Applications:	Flow Cytometry
Recommended Dilutions:	Flow Cytometry: 1-2 µg/million cells, IHC: 1-2 µg/ml
Reactivity:	Human
Immunogen:	Recombinant fragment, around amino acids 2293-2478, of human Ki67 protein. The exact sequence is proprietary.
Host:	Mouse
Clonality:	Monoclonal
Clone ID:	MKI67/2463
Isotype:	IgG1
Light Chains:	kappa
Conjugate:	Unconjugated
Purification:	Protein A/G chromatography.
Concentration:	200 µg/ml
Product Form:	Liquid
Formulation:	Supplied in 10mM Phosphate Buffered Saline with 0.05% BSA and 0.05% Sodium Azide.
Storage:	Shipped at 4°C. Upon delivery aliquot and store at -20°C. Avoid freeze / thaw cycles.
General Notes:	This monoclonal antibody is also available in a different formulation without BSA and Sodium Azide - Anti-Ki67 Antibody [MKI67/2463] - BSA and Azide free (A252526).
Disclaimer:	This product is for research use only. It is not intended for diagnostic or therapeutic use.

## Anti-Ki67 Antibody [MKI67/2463] (A249346)

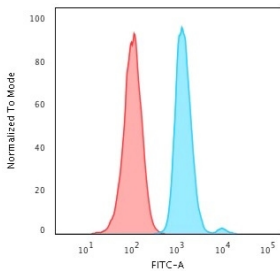
### Images:



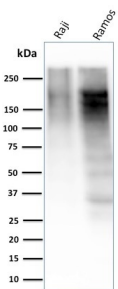
Immunohistochemical analysis of formalin-fixed, paraffin-embedded human skin using Anti-Ki67 Antibody [MKI67/2463].



Immunohistochemical analysis of formalin-fixed, paraffin-embedded human tonsil using Anti-Ki67 Antibody [MKI67/2463].



Flow cytometric analysis of HeLa cells using Anti-Ki67 Antibody [MKI67/2463] followed by Goat Anti-Mouse IgG (CF® 488) (Blue). Isotype Control (Red).



Western blot analysis of Raji and Ramos cell lysates using Anti-Ki67 Antibody [MKI67/2463].