

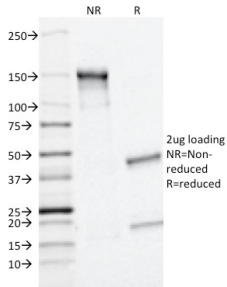
Anti-MRP1 Antibody [MRP1/1343] (A249378)

Specifications:

Name:	Anti-MRP1 Antibody [MRP1/1343]
Description:	Mouse monoclonal [MRP1/1343] antibody to MRP1.
Specificity:	The two members of the large family of ABC transporters known to confer multidrug resistance in human cancer cells are the MDR1 P-glycoprotein and the multidrug-resistance protein MRP1. MRP1 is an integral membrane protein that contains an MDR-like core, an N-terminal membrane-bound region and a cytoplasmic linker, and it is expressed in various cerebral cells, as well as in lung, testis and peripheral blood.
Applications:	ELISA, Flow Cytometry, WB
Recommended Dilutions:	Flow Cytometry: 1-2 µg/million cells, WB: 1-2 µg/ml
Reactivity:	Human
Immunogen:	Recombinant full-length human ABCC1 protein.
Host:	Mouse
Clonality:	Monoclonal
Clone ID:	MRP1/1343
Isotype:	IgG1
Light Chains:	kappa
Conjugate:	Unconjugated
Purification:	Protein A/G chromatography.
Concentration:	200 µg/ml
Product Form:	Liquid
Formulation:	Supplied in 10mM Phosphate Buffered Saline with 0.05% BSA and 0.05% Sodium Azide.
Storage:	Shipped at 4°C. Upon delivery aliquot and store at -20°C. Avoid freeze / thaw cycles.
General Notes:	This monoclonal antibody is also available in a different formulation without BSA and Sodium Azide - Anti-MRP1 Antibody [MRP1/1343] - BSA and Azide free (A252558).
Disclaimer:	This product is for research use only. It is not intended for diagnostic or therapeutic use.

Anti-MRP1 Antibody [MRP1/1343] (A249378)

Images:



SDS-PAGE analysis of Anti-MRP1 Antibody [MRP1/1343] under non-reduced and reduced conditions; showing intact IgG and intact heavy and light chains, respectively. SDS-PAGE analysis confirms the integrity and purity of the antibody.