

## Anti-MUC2 Antibody [CCP58] (A249418)

### Specifications:

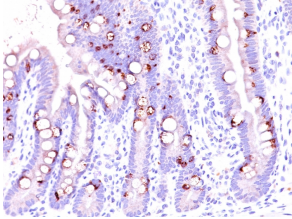
Name:	Anti-MUC2 Antibody [CCP58]
Description:	Mouse monoclonal [CCP58] antibody to MUC2.
Specificity:	This antibody recognizes a single glycoprotein of 520kDa, identified as mucin 2 (MUC2). This MAb shows no cross-reaction with human milk fat globule membranes, MUC1, or MUC3. Its epitope has been defined as GTQTP (GlyThrGlnThrPro). Mucins are high molecular weight glycoproteins, which constitute the major component of the mucus layer that protects the gastric epithelium. MUC2 is specifically expressed in goblet cells of the small intestine in about 65% of colonic carcinomas and about 40% of gastric carcinomas. MUC2 is rarely expressed outside of the GI tract with the exceptions of mucinous carcinoma of breast and clear cell-type carcinomas of the ovary.
Applications:	IHC-P
Recommended Dilutions:	IHC-P: 1-2 µg/ml
Reactivity:	Human
Immunogen:	A synthetic peptide of 29 amino acids from MUC2 protein, coupled to KLH.
Sequence:	KYPTTTPISTTTMVTPTPTGTQTPTTT
Host:	Mouse
Clonality:	Monoclonal
Clone ID:	CCP58
Isotype:	IgG1
Light Chains:	kappa
Conjugate:	Unconjugated
Purification:	Protein A/G chromatography.
Concentration:	200 µg/ml
Product Form:	Liquid
Formulation:	Supplied in 10mM Phosphate Buffered Saline with 0.05% BSA and 0.05% Sodium Azide.
Storage:	Shipped at 4°C. Upon delivery aliquot and store at -20°C. Avoid freeze / thaw cycles.
General Notes:	This monoclonal antibody is also available in a different formulation without BSA and Sodium Azide - Anti-MUC2 Antibody [CCP58] - BSA and Azide free (A252598).

## Anti-MUC2 Antibody [CCP58] (A249418)

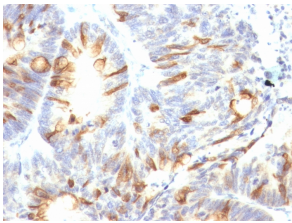
### Specifications continued:

**Disclaimer:** This product is for research use only. It is not intended for diagnostic or therapeutic use.

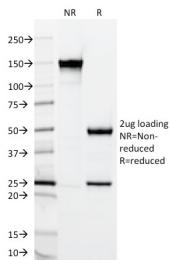
### Images:



Immunohistochemical analysis of formalin-fixed, paraffin-embedded human intestine using Anti-MUC2 Antibody [CCP58].



Immunohistochemical analysis of formalin-fixed, paraffin-embedded human colon carcinoma using Anti-MUC2 Antibody [CCP58].



SDS-PAGE analysis of Anti-MUC2 Antibody [CCP58] under non-reduced and reduced conditions; showing intact IgG and intact heavy and light chains, respectively. SDS-PAGE analysis confirms the integrity and purity of the antibody.