

Anti-Neurofilament Heavy Polypeptide Antibody [SPM203] (A249490)

Specifications:

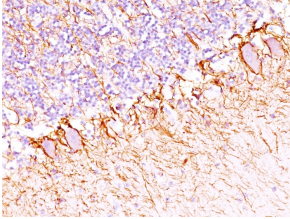
Name:	Anti-Neurofilament Heavy Polypeptide Antibody [SPM203]
Description:	Mouse monoclonal [SPM203] antibody to Neurofilament Heavy Polypeptide.
Specificity:	This antibody reacts with a 200kDa protein, identified as heavy sub-unit of neurofilaments (NF-H). Neurofilaments make up the main structural elements of axons and dendrites and are found in neurons, peripheral nerves, and sympathetic ganglion cells. Neurofilaments consist of three major subunits with molecular weights of 68kDa (NF-L), 160kDa (NF-M) and 200kDa (NF-H). Anti-neurofilament stains a number of neural, neuroendocrine, and endocrine tumors. Neuromas, ganglioneuromas, gangliogliomas, ganglioneuroblastomas, and neuroblastomas stain positively for anti-neurofilament. Neurofilaments are also present in paragangliomas as well as adrenal and extra-adrenal pheochromocytomas. Carcinoids, neuroendocrine carcinomas of the skin, and oat cell carcinomas of the lung also express neurofilament.
Applications:	Flow Cytometry, WB, IHC-P
Recommended Dilutions:	Flow Cytometry: 1-2 µg/million cells, WB: 1-2 µg/ml, IHC-P: 0.25-0.5 µg/ml
Reactivity:	Human, Mouse, Rat, Chicken, Porcine
Immunogen:	Triton-X 100 insoluble protein fraction of rat brain.
Host:	Mouse
Clonality:	Monoclonal
Clone ID:	SPM203
Isotype:	IgG1
Light Chains:	kappa
Conjugate:	Unconjugated
Purification:	Protein A/G chromatography.
Concentration:	200 µg/ml
Product Form:	Liquid
Formulation:	Supplied in 10mM Phosphate Buffered Saline with 0.05% BSA and 0.05% Sodium Azide.
Storage:	Shipped at 4°C. Upon delivery aliquot and store at -20°C. Avoid freeze / thaw cycles.
General Notes:	This monoclonal antibody is also available in a different formulation without BSA and Sodium Azide - Anti-Neurofilament Heavy Polypeptide Antibody [SPM203] - BSA and Azide free (A252670).

Anti-Neurofilament Heavy Polypeptide Antibody [SPM203] (A249490)

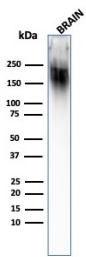
Specifications continued:

Disclaimer: This product is for research use only. It is not intended for diagnostic or therapeutic use.

Images:



Immunohistochemical analysis of formalin-fixed, paraffin-embedded human cerebellum using Anti-Neurofilament Heavy Polypeptide Antibody [SPM203].



Western blot analysis of human brain tissue lysate using Anti-Neurofilament Heavy Polypeptide Antibody [SPM203].