

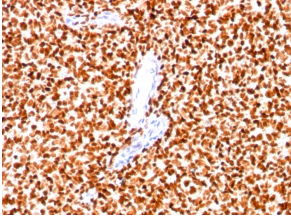
Anti-NKX2.2 Antibody [SPM564] (A249507)

Specifications:

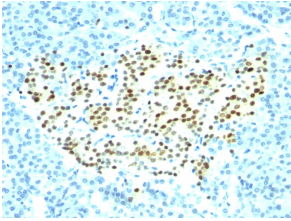
Name:	Anti-NKX2.2 Antibody [SPM564]
Description:	Mouse monoclonal [SPM564] antibody to NKX2.2.
Applications:	Flow Cytometry, IF, IHC-P
Recommended Dilutions:	Flow Cytometry: 1-2 µg/million cells, IF: 1-2 µg/ml, IHC-P: 1-2 µg/ml
Reactivity:	Human, Mouse, Rat, Chicken
Immunogen:	Recombinant human NKX2.2 protein.
Host:	Mouse
Clonality:	Monoclonal
Clone ID:	SPM564
Isotype:	IgG2b
Light Chains:	kappa
Conjugate:	Unconjugated
Purification:	Protein A/G chromatography.
Concentration:	200 µg/ml
Product Form:	Liquid
Formulation:	Supplied in 10mM Phosphate Buffered Saline with 0.05% BSA and 0.05% Sodium Azide.
Storage:	Shipped at 4°C. Upon delivery aliquot and store at -20°C. Avoid freeze / thaw cycles.
General Notes:	This monoclonal antibody is also available in a different formulation without BSA and Sodium Azide - Anti-NKX2.2 Antibody [SPM564] - BSA and Azide free (A252687).
Disclaimer:	This product is for research use only. It is not intended for diagnostic or therapeutic use.

Anti-NKX2.2 Antibody [SPM564] (A249507)

Images:



Immunohistochemical analysis of formalin-fixed, paraffin-embedded human Ewing's sarcoma using Anti-NKX2.2 Antibody [SPM564].



Immunohistochemical analysis of formalin-fixed, paraffin-embedded human pancreas using Anti-NKX2.2 Antibody [SPM564].