

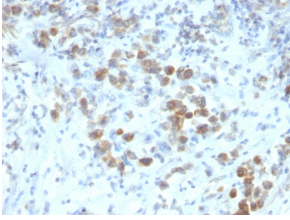
Anti-PAX6 Antibody [SPM612] (A249568)

Specifications:

Name:	Anti-PAX6 Antibody [SPM612]
Description:	Mouse monoclonal [SPM612] antibody to PAX6.
Applications:	Flow Cytometry, IF, IHC-P
Recommended Dilutions:	Flow Cytometry: 1-2 µg/million cells, IF: 1-2 µg/ml, IHC-P: 1-2 µg/ml
Reactivity:	Human
Immunogen:	Recombinant fragment, amino acids 1-300, of human PAX6 protein.
Host:	Mouse
Clonality:	Monoclonal
Clone ID:	SPM612
Isotype:	IgG1
Light Chains:	kappa
Conjugate:	Unconjugated
Purification:	Protein A/G chromatography.
Concentration:	200 µg/ml
Product Form:	Liquid
Formulation:	Supplied in 10mM Phosphate Buffered Saline with 0.05% BSA and 0.05% Sodium Azide.
Storage:	Shipped at 4°C. Upon delivery aliquot and store at -20°C. Avoid freeze / thaw cycles.
General Notes:	This monoclonal antibody is also available in a different formulation without BSA and Sodium Azide - Anti-PAX6 Antibody [SPM612] - BSA and Azide free (A252748).
Disclaimer:	This product is for research use only. It is not intended for diagnostic or therapeutic use.

Anti-PAX6 Antibody [SPM612] (A249568)

Images:



Immunohistochemical analysis of formalin-fixed, paraffin-embedded human gastric carcinoma using Anti-PAX6 Antibody [SPM612].