

## Anti-Prohibitin Antibody [PHB/3225] (A249627)

### Specifications:

|                        |   |
|------------------------|---|
| Name:                  | Anti-Prohibitin Antibody [PHB/3225]   |
| Description:           | Mouse monoclonal [PHB/3225] antibody to Prohibitin.   |
| Specificity:           | This antibody recognizes a protein of 30kDa which is identified as Prohibitin, an evolutionarily conserved protein with homologues found in yeast to man. It is located in the inner membrane of mitochondria. Although prohibitin mRNA and protein expression occurs throughout the cell cycle, maximum levels are detected during the G1/S phase transition and minimum levels are seen in S phase and the G2/mitosis boundary. Prohibitin is located exclusively in the mitochondria with the highest concentration on the inner membrane. Prohibitin is an ideal mitochondrial marker. It shows antiproliferative activity and has been proposed to play a role in normal cell cycle regulation, replicative senescence, cellular immortalization, and tumor suppression. |
| Applications:          | WB, IF, IHC-P   |
| Recommended Dilutions: | WB: 1-2 µg/ml, IF: 1-2 µg/ml, IHC-P: 1-2 µg/ml  |
| Reactivity:            | Human   |
| Immunogen:             | Recombinant fragment, around amino acids 167-261, of human PHB protein. The exact sequence is proprietary.  |
| Host:                  | Mouse   |
| Clonality:             | Monoclonal  |
| Clone ID:              | PHB/3225  |
| Isotype:               | IgG2b   |
| Light Chains:          | kappa   |
| Conjugate:             | Unconjugated  |
| Purification:          | Protein A/G chromatography.   |
| Concentration:         | 200 µg/ml   |
| Product Form:          | Liquid  |
| Formulation:           | Supplied in 10mM Phosphate Buffered Saline with 0.05% BSA and 0.05% Sodium Azide.   |
| Storage:               | Shipped at 4°C. Upon delivery aliquot and store at -20°C. Avoid freeze / thaw cycles.   |
| General Notes:         | This monoclonal antibody is also available in a different formulation without BSA and Sodium Azide - Anti-Prohibitin Antibody [PHB/3225] - BSA and Azide free (A252807).  |

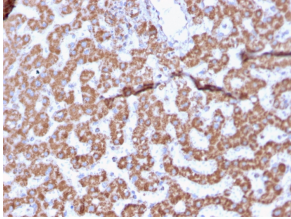
## Anti-Prohibitin Antibody [PHB/3225] (A249627)

### Specifications continued:

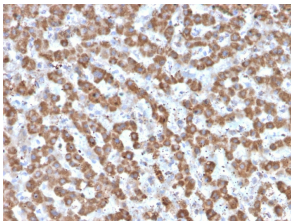
Disclaimer:

This product is for research use only. It is not intended for diagnostic or therapeutic use.

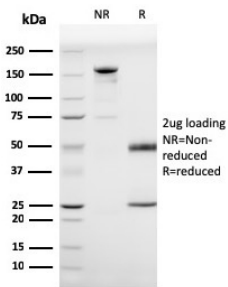
### Images:



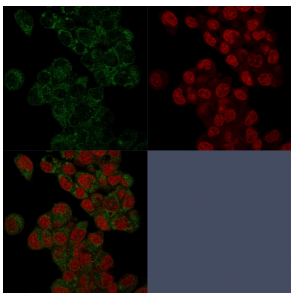
Immunohistochemical analysis of formalin-fixed, paraffin-embedded human liver using Anti-Prohibitin Antibody [PHB/3225].



Immunohistochemical analysis of formalin-fixed, paraffin-embedded human liver using Anti-Prohibitin Antibody [PHB/3225].



SDS-PAGE analysis of Anti-Prohibitin Antibody [PHB/3225] under non-reduced and reduced conditions; showing intact IgG and intact heavy and light chains, respectively. SDS-PAGE analysis confirms the integrity and purity of the antibody.



Immunofluorescent analysis of HepG2 cells stained with Anti-Prohibitin Antibody [PHB/3225] (CF@ 488) (Green). Nuclear counterstain is RedDot.