

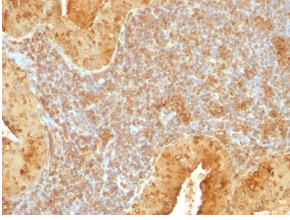
## Anti-Cytochrome C Antibody [7H8.2C12] (A249643)

### Specifications:

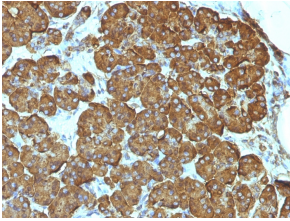
Name:	Anti-Cytochrome C Antibody [7H8.2C12]
Description:	Mouse monoclonal [7H8.2C12] antibody to Cytochrome C.
Applications:	WB, Flow Cytometry, IHC-P
Recommended Dilutions:	WB: 1-2 µg/ml, Flow Cytometry: 1-2 µg/million cells, IHC-P: 1-2 µg/ml
Reactivity:	Human, Mouse, Rat, Horse, Canine, Pigeon, Frog, Drosophila
Immunogen:	Synthetic peptides corresponding to amino acids 1-80, 81-104, and 66-104 of pigeon Cytochrome C
Host:	Mouse
Clonality:	Monoclonal
Clone ID:	7H8.2C12
Isotype:	IgG2b
Light Chains:	kappa
Conjugate:	Unconjugated
Purification:	Protein A/G chromatography.
Concentration:	200 µg/ml
Product Form:	Liquid
Formulation:	Supplied in 10mM Phosphate Buffered Saline with 0.05% BSA and 0.05% Sodium Azide.
Storage:	Shipped at 4°C. Upon delivery aliquot and store at -20°C. Avoid freeze / thaw cycles.
General Notes:	This monoclonal antibody is also available in a different formulation without BSA and Sodium Azide - Anti-Cytochrome C Antibody [7H8.2C12] - BSA and Azide free (A252823).
Disclaimer:	This product is for research use only. It is not intended for diagnostic or therapeutic use.

## Anti-Cytochrome C Antibody [7H8.2C12] (A249643)

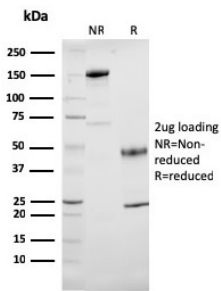
### Images:



Immunohistochemical analysis of formalin-fixed, paraffin-embedded human salivary tumor using Anti-Cytochrome C Antibody [7H8.2C12].



Immunohistochemical analysis of formalin-fixed, paraffin-embedded human pancreas using Anti-Cytochrome C Antibody [7H8.2C12].



SDS-PAGE analysis of Anti-Cytochrome C Antibody [7H8.2C12] under non-reduced and reduced conditions; showing intact IgG and intact heavy and light chains, respectively. SDS-PAGE analysis confirms the integrity and purity of the antibody.