

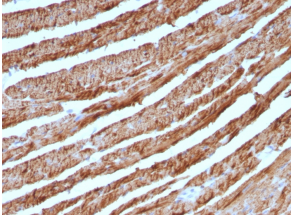
Anti-Cytochrome C Antibody [CTC05] (A249645)

Specifications:

| | |
|------------------------|---|
| Name: | Anti-Cytochrome C Antibody [CTC05] |
| Description: | Mouse monoclonal [CTC05] antibody to Cytochrome C. |
| Applications: | WB, Flow Cytometry, IHC-P |
| Recommended Dilutions: | WB: 1-2 µg/ml, Flow Cytometry: 1-2 µg/million cells, IHC-P: 0.25-0.5 µg/ml |
| Reactivity: | Human, Mouse, Rat, Horse, Canine, Pigeon, Frog, Drosophila |
| Immunogen: | Recombinant Cytochrome c protein. |
| Host: | Mouse |
| Clonality: | Monoclonal |
| Clone ID: | CTC05 |
| Isotype: | IgG2b |
| Light Chains: | kappa |
| Conjugate: | Unconjugated |
| Purification: | Protein A/G chromatography. |
| Concentration: | 200 µg/ml |
| Product Form: | Liquid |
| Formulation: | Supplied in 10mM Phosphate Buffered Saline with 0.05% BSA and 0.05% Sodium Azide. |
| Storage: | Shipped at 4°C. Upon delivery aliquot and store at -20°C. Avoid freeze / thaw cycles. |
| General Notes: | This monoclonal antibody is also available in a different formulation without BSA and Sodium Azide - Anti-Cytochrome C Antibody [CTC05] - BSA and Azide free (A252825). |
| Disclaimer: | This product is for research use only. It is not intended for diagnostic or therapeutic use. |

Anti-Cytochrome C Antibody [CTC05] (A249645)

Images:



Immunohistochemical analysis of formalin-fixed, paraffin-embedded human heart using Anti-Cytochrome C Antibody [CTC05].