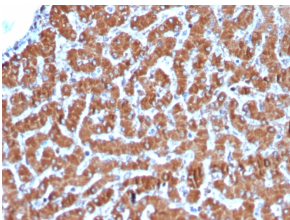


## Anti-Cytochrome C Antibody [CYCS/3128R] (A249649)

### Specifications:

Name:	Anti-Cytochrome C Antibody [CYCS/3128R]
Description:	Recombinant rabbit monoclonal [CYCS/3128R] antibody to Cytochrome C.
Applications:	IF, WB, Flow Cytometry, IHC-P
Recommended Dilutions:	IF: 1-2 µg/ml, WB: 1-2 µg/ml, Flow Cytometry: 1-2 µg/million cells, IHC-P: 0.25-0.5 µg/ml
Reactivity:	Human, Mouse, Rat, Horse, Canine, Pigeon, Frog, Drosophila
Immunogen:	Recombinant full-length human CYCS protein.
Host:	Rabbit
Clonality:	Monoclonal
Clone ID:	CYCS/3128R
Isotype:	IgG
Conjugate:	Unconjugated
Purification:	Protein A/G chromatography.
Concentration:	200 µg/ml
Product Form:	Liquid
Formulation:	Supplied in 10mM Phosphate Buffered Saline with 0.05% BSA and 0.05% Sodium Azide.
Storage:	Shipped at 4°C. Upon delivery aliquot and store at -20°C. Avoid freeze / thaw cycles.
General Notes:	This monoclonal antibody is also available in a different formulation without BSA and Sodium Azide - Anti-Cytochrome C Antibody [CYCS/3128R] - BSA and Azide free (A252829).
Disclaimer:	This product is for research use only. It is not intended for diagnostic or therapeutic use.

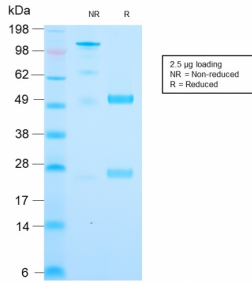
### Images:



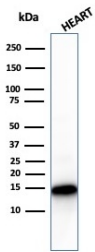
Immunohistochemical analysis of formalin-fixed, paraffin-embedded human liver using Anti-Cytochrome C Antibody [CYCS/3128R].

## Anti-Cytochrome C Antibody [CYCS/3128R] (A249649)

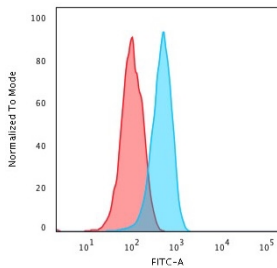
Images continued:



SDS-PAGE analysis of Anti-Cytochrome C Antibody [CYCS/3128R] under non-reduced and reduced conditions; showing intact IgG and intact heavy and light chains, respectively. SDS-PAGE analysis confirms the integrity and purity of the antibody.



Western blot analysis of human heart tissue lysate using Anti-Cytochrome C Antibody [CYCS/3128R].



Flow cytometric analysis of PFA fixed HeLa cells using Anti-Cytochrome C Antibody [CYCS/3128R] followed by Goat Anti-Rabbit IgG (CF® 488) (Blue). Isotype Control (Red).