

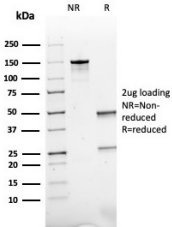
Anti-ACTH Antibody [rCLIP/1407] (A249655)

Specifications:

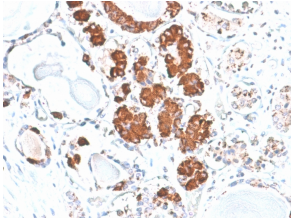
Name:	Anti-ACTH Antibody [rCLIP/1407]
Description:	Recombinant mouse monoclonal [rCLIP/1407] antibody to ACTH.
Specificity:	This antibody is specific to Synacthen, amino acids 1-24 of ACTH, and it does not react with CLIP, amino acids 25-39 of ACTH.
Applications:	IHC-P
Recommended Dilutions:	IHC-P: 1-2 µg/ml
Reactivity:	Human, Mouse, Rat
Immunogen:	Synthetic peptide corresponding to amino acids 25-39 of human ACTH protein.
Sequence:	NGAEDESAEAFPLEF
Host:	Mouse
Clonality:	Monoclonal
Clone ID:	rCLIP/1407
Isotype:	IgG1
Light Chains:	kappa
Conjugate:	Unconjugated
Purification:	Protein A/G chromatography.
Concentration:	200 µg/ml
Product Form:	Liquid
Formulation:	Supplied in 10mM Phosphate Buffered Saline with 0.05% BSA and 0.05% Sodium Azide.
Storage:	Shipped at 4°C. Upon delivery aliquot and store at -20°C. Avoid freeze / thaw cycles.
General Notes:	This monoclonal antibody is also available in a different formulation without BSA and Sodium Azide - Anti-ACTH Antibody [rCLIP/1407] - BSA and Azide free (A252835).
Disclaimer:	This product is for research use only. It is not intended for diagnostic or therapeutic use.

Anti-ACTH Antibody [rCLIP/1407] (A249655)

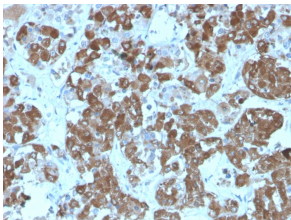
Images:



SDS-PAGE analysis of Anti-ACTH Antibody [rCLIP/1407] under non-reduced and reduced conditions; showing intact IgG and intact heavy and light chains, respectively. SDS-PAGE analysis confirms the integrity and purity of the antibody.



Immunohistochemical analysis of formalin-fixed, paraffin-embedded human pituitary using Anti-ACTH Antibody [rCLIP/1407].



Immunohistochemical analysis of formalin-fixed, paraffin-embedded human pituitary using Anti-ACTH Antibody [rCLIP/1407].