

Anti-Cyclin D1 Antibody [rCCND1/4752] (A249855)

Specifications:

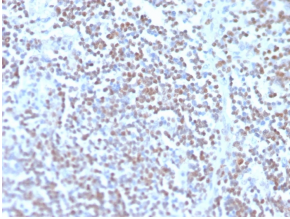
Name:	Anti-Cyclin D1 Antibody [rCCND1/4752]
Description:	Recombinant mouse monoclonal [rCCND1/4752] antibody to Cyclin D1.
Specificity:	This antibody recognizes a protein of 36kDa, identified as cyclin D1. Cyclin D1, one of the key cell cycle regulators, is a putative proto-oncogene overexpressed in a wide variety of human neoplasms. This antibody neutralizes the activity of cyclin D1 in vivo. About 60% of mantle cell lymphomas (MCL) contain a t(11; 14)(q13; q32) translocation resulting in over-expression of cyclin D1. This antibody is useful in identifying mantle cell lymphomas (cyclin D1 positive) from CLL/SLL and follicular lymphomas (cyclin D1 negative). Occasionally, hairy cell leukemia and plasma cell myeloma weakly express Cyclin D1.
Applications:	IHC-P
Recommended Dilutions:	IHC-P: 1-2 µg/ml
Reactivity:	Human
Immunogen:	Synthetic peptide corresponding to amino acids within 200-295 of Cyclin D1.
Host:	Mouse
Clonality:	Monoclonal
Clone ID:	rCCND1/4752
Isotype:	IgG2a
Light Chains:	kappa
Conjugate:	Unconjugated
Purification:	Protein A/G chromatography.
Concentration:	200 µg/ml
Product Form:	Liquid
Formulation:	Supplied in 10mM Phosphate Buffered Saline with 0.05% BSA and 0.05% Sodium Azide.
Storage:	Shipped at 4°C. Upon delivery aliquot and store at -20°C. Avoid freeze / thaw cycles.
General Notes:	This monoclonal antibody is also available in a different formulation without BSA and Sodium Azide - Anti-Cyclin D1 Antibody [rCCND1/4752] - BSA and Azide free (A253035).

Anti-Cyclin D1 Antibody [rCCND1/4752] (A249855)

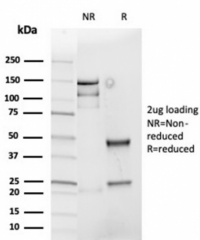
Specifications continued:

Disclaimer: This product is for research use only. It is not intended for diagnostic or therapeutic use.

Images:



Immunohistochemical analysis of formalin-fixed, paraffin-embedded human mantle cell lymphoma using Anti-Cyclin D1 Antibody [rCCND1/4752].



SDS-PAGE analysis of Anti-Cyclin D1 Antibody [rCCND1/4752] under non-reduced and reduced conditions; showing intact IgG and intact heavy and light chains, respectively. SDS-PAGE analysis confirms the integrity and purity of the antibody.