

## Anti-Fascin Antibody [FSCN1/417] (A249991)

### Specifications:

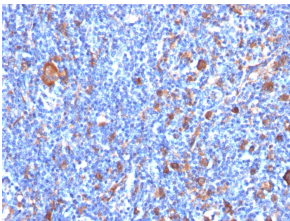
|                        |  |
|------------------------|--|
| Name:                  | Anti-Fascin Antibody [FSCN1/417]   |
| Description:           | Mouse monoclonal [FSCN1/417] antibody to Fascin.   |
| Specificity:           | This antibody recognizes a protein of 55kDa, which is identified as fascin-1. Its actin binding ability is regulated by phosphorylation. Antibody to fascin-1 is a very sensitive marker for Reed-Sternberg cells and variants in nodular sclerosis, mixed cellularity, and lymphocyte depletion Hodgkins disease. It is uniformly negative in lymphoid cells, plasma cells, and myeloid cells. Fascin-1 is also expressed in dendritic cells. This marker may be helpful to distinguish between Hodgkin lymphoma and non-Hodgkin lymphoma in difficult cases. Also, the lack of expression of fascin-1 in the neoplastic follicles in follicular lymphoma may be helpful in distinguishing these lymphomas from reactive follicular hyperplasia in which the number of follicular dendritic cells is normal or increased. Antibody to fascin-1 has been suggested as a prognostic marker in neuroendocrine neoplasms of the lung as well as in ovarian cancer. Fascin-1 expression may be induced by Epstein-Barr virus (EBV) infection of B cells with the possibility that viral induction of fascin in lymphoid or other cell types must also be considered in EBV-positive cases. |
| Applications:          | Flow Cytometry, IF, WB, IHC-P  |
| Recommended Dilutions: | Flow Cytometry: 1-2 µg/million cells, IF: 1-2 µg/ml, WB: 1-2 µg/ml, IHC-P: 1-2 µg/ml   |
| Reactivity:            | Human  |
| Immunogen:             | Recombinant full-length human FSCN1 protein.   |
| Host:                  | Mouse  |
| Clonality:             | Monoclonal   |
| Clone ID:              | FSCN1/417  |
| Isotype:               | IgG2a  |
| Light Chains:          | kappa  |
| Conjugate:             | Unconjugated   |
| Purification:          | Protein A/G chromatography.  |
| Concentration:         | 200 µg/ml  |
| Product Form:          | Liquid   |
| Formulation:           | Supplied in 10mM Phosphate Buffered Saline with 0.05% BSA and 0.05% Sodium Azide.  |

## Anti-Fascin Antibody [FSCN1/417] (A249991)

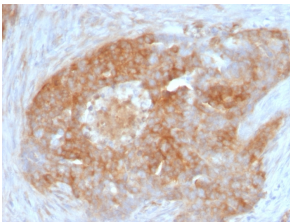
### Specifications continued:

|                |   |
|----------------|---|
| Storage:       | Shipped at 4°C. Upon delivery aliquot and store at -20°C. Avoid freeze / thaw cycles.   |
| General Notes: | This monoclonal antibody is also available in a different formulation without BSA and Sodium Azide - Anti-Fascin Antibody [FSCN1/417] - BSA and Azide free (A253171). |
| Disclaimer:    | This product is for research use only. It is not intended for diagnostic or therapeutic use.  |

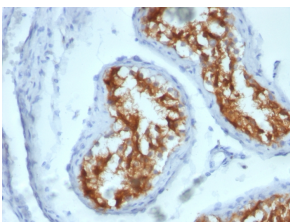
### Images:



Immunohistochemical analysis of formalin-fixed, paraffin-embedded human Hodgkin's lymphoma using Anti-Fascin Antibody [FSCN1/417].



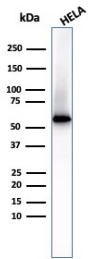
Immunohistochemical analysis of formalin-fixed, paraffin-embedded human ovarian carcinoma using Anti-Fascin Antibody [FSCN1/417].



Immunohistochemical analysis of formalin-fixed, paraffin-embedded human testicular carcinoma using Anti-Fascin Antibody [FSCN1/417].

## Anti-Fascin Antibody [FSCN1/417] (A249991)

Images continued:



Western blot analysis of HeLa cell lysate using Anti-Fascin Antibody [FSCN1/417].