

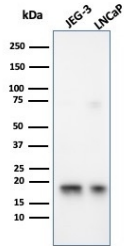
Anti-Superoxide Dismutase 1 Antibody [SOD1/3926] (A249999)

Specifications:

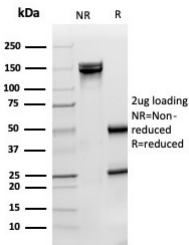
Name:	Anti-Superoxide Dismutase 1 Antibody [SOD1/3926]
Description:	Mouse monoclonal [SOD1/3926] antibody to Superoxide Dismutase 1.
Applications:	WB, IHC-P
Recommended Dilutions:	WB: 2-4 µg/ml, IHC-P: 1-2 µg/ml
Reactivity:	Human
Immunogen:	Recombinant fragment, around amino acids 14-148, of human SOD1 protein. The exact sequence is proprietary.
Host:	Mouse
Clonality:	Monoclonal
Clone ID:	SOD1/3926
Isotype:	IgG1
Light Chains:	kappa
Conjugate:	Unconjugated
Purification:	Protein A/G chromatography.
Concentration:	200 µg/ml
Product Form:	Liquid
Formulation:	Supplied in 10mM Phosphate Buffered Saline with 0.05% BSA and 0.05% Sodium Azide.
Storage:	Shipped at 4°C. Upon delivery aliquot and store at -20°C. Avoid freeze / thaw cycles.
General Notes:	This monoclonal antibody is also available in a different formulation without BSA and Sodium Azide - Anti-Superoxide Dismutase 1 Antibody [SOD1/3926] - BSA and Azide free (A253179).
Disclaimer:	This product is for research use only. It is not intended for diagnostic or therapeutic use.

Anti-Superoxide Dismutase 1 Antibody [SOD1/3926] (A249999)

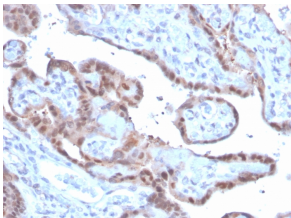
Images:



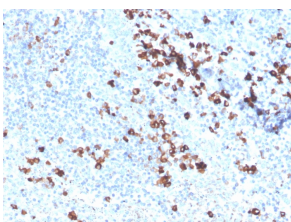
Western blot analysis of JEG-3 and LNCaP cell lysates using Anti-Superoxide Dismutase 1 Antibody [SOD1/3926].



SDS-PAGE analysis of Anti-Superoxide Dismutase 1 Antibody [SOD1/3926] under non-reduced and reduced conditions; showing intact IgG and intact heavy and light chains, respectively. SDS-PAGE analysis confirms the integrity and purity of the antibody.



Immunohistochemical analysis of formalin-fixed, paraffin-embedded human placenta using Anti-Superoxide Dismutase 1 Antibody [SOD1/3926].



Immunohistochemical analysis of formalin-fixed, paraffin-embedded human tonsil using Anti-Superoxide Dismutase 1 Antibody [SOD1/3926].