

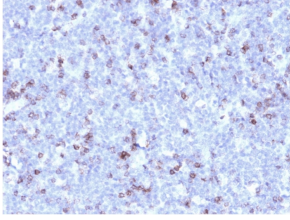
## Anti-CD43 Antibody [rSPN/1094] (A250031)

### Specifications:

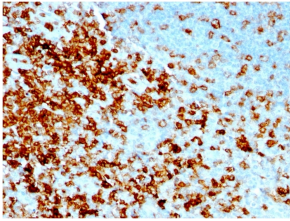
|                        |   |
|------------------------|---|
| Name:                  | Anti-CD43 Antibody [rSPN/1094]  |
| Description:           | Recombinant mouse monoclonal [rSPN/1094] antibody to CD43.  |
| Applications:          | WB, Flow Cytometry, IF, IHC-P   |
| Recommended Dilutions: | WB: 1-2 µg/ml, Flow Cytometry: 1-2 µg/million cells, IF: 1-2 µg/ml, IHC-P: 1-2 µg/ml  |
| Reactivity:            | Human   |
| Immunogen:             | Recombinant full-length human CD43 protein.   |
| Host:                  | Mouse   |
| Clonality:             | Monoclonal  |
| Clone ID:              | rSPN/1094   |
| Isotype:               | IgG1  |
| Light Chains:          | kappa   |
| Conjugate:             | Unconjugated  |
| Purification:          | Protein A/G chromatography.   |
| Concentration:         | 200 µg/ml   |
| Product Form:          | Liquid  |
| Formulation:           | Supplied in 10mM Phosphate Buffered Saline with 0.05% BSA and 0.05% Sodium Azide.   |
| Storage:               | Shipped at 4°C. Upon delivery aliquot and store at -20°C. Avoid freeze / thaw cycles.   |
| General Notes:         | This monoclonal antibody is also available in a different formulation without BSA and Sodium Azide - Anti-CD43 Antibody [rSPN/1094] - BSA and Azide free (A253211). |
| Disclaimer:            | This product is for research use only. It is not intended for diagnostic or therapeutic use.  |

# Anti-CD43 Antibody [rSPN/1094] (A250031)

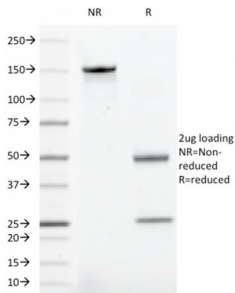
Images:



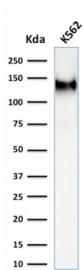
Immunohistochemical analysis of formalin-fixed, paraffin-embedded human lymphoma using Anti-CD43 Antibody [rSPN/1094].



Immunohistochemical analysis of formalin-fixed, paraffin-embedded human tonsil using Anti-CD43 Antibody [rSPN/1094].



SDS-PAGE analysis of Anti-CD43 Antibody [rSPN/1094] under non-reduced and reduced conditions; showing intact IgG and intact heavy and light chains, respectively. SDS-PAGE analysis confirms the integrity and purity of the antibody.



Western blot analysis of K562 cell lysate using Anti-CD43 Antibody [rSPN/1094].