

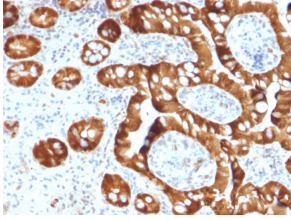
Anti-Estrogen Sulfotransferase Antibody [CPTC-SULT1E1-1] (A250068)

Specifications:

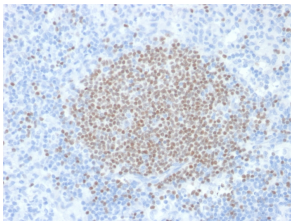
Name:	Anti-Estrogen Sulfotransferase Antibody [CPTC-SULT1E1-1]
Description:	Mouse monoclonal [CPTC-SULT1E1-1] antibody to Estrogen Sulfotransferase.
Specificity:	The soluble sulfotransferases contribute to the elimination of xenobiotics, the activation of procarcinogens and the regulation of hormones by catalyzing the sulfate conjugation of these substances. SULT1E1, also known as STE, is a 294 amino acid member of the SULT1 family. Localized to the cytoplasm and expressed in intestine, liver and kidney, SULT1E1 exists as a homodimer that is thought to control estrogen receptor (ER) levels by sulfurylating free estradiol. Defects in the gene encoding SULT1E1 are associated with an increased risk for endometrial cancer, suggesting a role for SULT1E1 in tumorigenesis.
Applications:	WB, IHC-P
Recommended Dilutions:	WB: 1-2 µg/ml, IHC-P: 1-2 µg/ml
Reactivity:	Human
Immunogen:	Recombinant full-length human SULT1E1 protein.
Host:	Mouse
Clonality:	Monoclonal
Clone ID:	CPTC-SULT1E1-1
Isotype:	IgG2b
Light Chains:	kappa
Conjugate:	Unconjugated
Purification:	Protein A/G chromatography.
Concentration:	200 µg/ml
Product Form:	Liquid
Formulation:	Supplied in 10mM Phosphate Buffered Saline with 0.05% BSA and 0.05% Sodium Azide.
Storage:	Shipped at 4°C. Upon delivery aliquot and store at -20°C. Avoid freeze / thaw cycles.
General Notes:	This monoclonal antibody is also available in a different formulation without BSA and Sodium Azide - Anti-Estrogen Sulfotransferase Antibody [CPTC-SULT1E1-1] - BSA and Azide free (A253248).
Disclaimer:	This product is for research use only. It is not intended for diagnostic or therapeutic use.

Anti-Estrogen Sulfotransferase Antibody [CPTC-SULT1E1-1] (A250068)

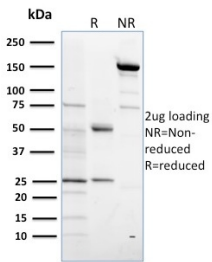
Images:



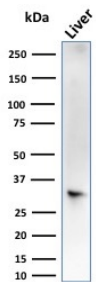
Immunohistochemical analysis of formalin-fixed, paraffin-embedded human small intestine using Anti-Estrogen Sulfotransferase Antibody [CPTC-SULT1E1-1].



Immunohistochemical analysis of formalin-fixed, paraffin-embedded human lymph node using Anti-Estrogen Sulfotransferase Antibody [CPTC-SULT1E1-1].



SDS-PAGE analysis of Anti-Estrogen Sulfotransferase Antibody [CPTC-SULT1E1-1] under non-reduced and reduced conditions; showing intact IgG and intact heavy and light chains, respectively. SDS-PAGE analysis confirms the integrity and purity of the antibody.



Western blot analysis of liver tissue lysate using Anti-Estrogen Sulfotransferase Antibody [CPTC-SULT1E1-1].