

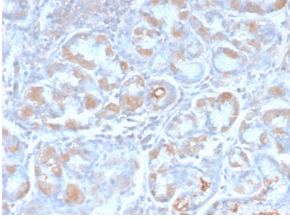
Anti-Estrogen Inducible Protein pS6 Antibody [TFF1/2969R] (A250090)

Specifications:

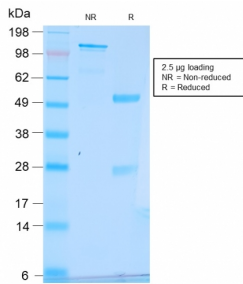
Name:	Anti-Estrogen Inducible Protein pS6 Antibody [TFF1/2969R]
Description:	Recombinant rabbit monoclonal [TFF1/2969R] antibody to Estrogen Inducible Protein pS6.
Specificity:	The epitope of this antibody is localized between amino acids 57-84 of human pS2 protein.
Applications:	IHC-P
Recommended Dilutions:	IHC-P: 1-2 µg/ml
Reactivity:	Human, Cynomolgus Monkey
Immunogen:	Synthetic peptide of 28 amino acid residues corresponding to CFDDTVRGVPWCFYPNTIDVPPEEECEF (aa57-84) from the C-terminus of human pS2.
Sequence:	CFDDTVRGVPWCFYPNTIDVPPEEECEF
Host:	Rabbit
Clonality:	Monoclonal
Clone ID:	TFF1/2969R
Isotype:	IgG
Conjugate:	Unconjugated
Purification:	Protein A/G chromatography.
Concentration:	200 µg/ml
Product Form:	Liquid
Formulation:	Supplied in 10mM Phosphate Buffered Saline with 0.05% BSA and 0.05% Sodium Azide.
Storage:	Shipped at 4°C. Upon delivery aliquot and store at -20°C. Avoid freeze / thaw cycles.
General Notes:	This monoclonal antibody is also available in a different formulation without BSA and Sodium Azide - Anti-Estrogen Inducible Protein pS6 Antibody [TFF1/2969R] - BSA and Azide free (A253270).
Disclaimer:	This product is for research use only. It is not intended for diagnostic or therapeutic use.

Anti-Estrogen Inducible Protein pS6 Antibody [TFF1/2969R] (A250090)

Images:



Immunohistochemical analysis of formalin-fixed, paraffin-embedded human stomach carcinoma using Anti-Estrogen Inducible Protein pS6 Antibody [TFF1/2969R].



SDS-PAGE analysis of Anti-Estrogen Inducible Protein pS6 Antibody [TFF1/2969R] under non-reduced and reduced conditions; showing intact IgG and intact heavy and light chains, respectively. SDS-PAGE analysis confirms the integrity and purity of the antibody.