

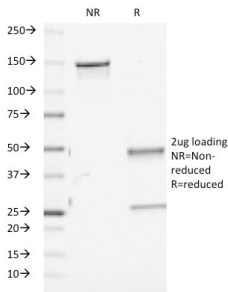
## Anti-TGF beta Antibody [TGFB/510] (A250120)

### Specifications:

Name:	Anti-TGF beta Antibody [TGFB/510]
Description:	Mouse monoclonal [TGFB/510] antibody to TGF beta.
Specificity:	This antibody recognizes TGF beta 1, 2 and 3. TGFs inhibit the growth of epithelial cells and stimulate the growth of mesenchymal cells. Most breast lesions, benign and malignant, involve abnormal proliferation and altered architecture of stromal and/or epithelial elements.
Applications:	Functional Studies, ELISA
Recommended Dilutions:	ELISA: 0.1-0.4 µg/ml (detection) or 2-8 µg/ml (capture)
Reactivity:	Human, Monkey, Bovine, Canine, Mouse, Rat, Hamster
Immunogen:	Recombinant full-length human TGF beta 2 protein.
Host:	Mouse
Clonality:	Monoclonal
Clone ID:	TGFB/510
Isotype:	IgG1
Light Chains:	kappa
Conjugate:	Unconjugated
Purification:	Protein A/G chromatography.
Concentration:	200 µg/ml
Product Form:	Liquid
Formulation:	Supplied in 10mM Phosphate Buffered Saline with 0.05% BSA and 0.05% Sodium Azide.
Storage:	Shipped at 4°C. Upon delivery aliquot and store at -20°C. Avoid freeze / thaw cycles.
General Notes:	This monoclonal antibody is also available in a different formulation without BSA and Sodium Azide - Anti-TGF beta Antibody [TGFB/510] - BSA and Azide free (A253300).
Disclaimer:	This product is for research use only. It is not intended for diagnostic or therapeutic use.

## Anti-TGF beta Antibody [TGFB/510] (A250120)

### Images:



SDS-PAGE analysis of Anti-TGF beta Antibody [TGFB/510] under non-reduced and reduced conditions; showing intact IgG and intact heavy and light chains, respectively. SDS-PAGE analysis confirms the integrity and purity of the antibody.