

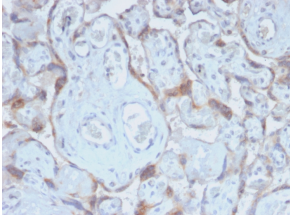
Anti-TIMP2 Antibody [TIMP2/2488R] (A250137)

Specifications:

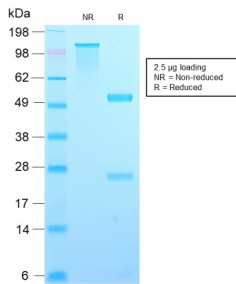
Name:	Anti-TIMP2 Antibody [TIMP2/2488R]
Description:	Recombinant rabbit monoclonal [TIMP2/2488R] antibody to TIMP2.
Applications:	IHC-P
Recommended Dilutions:	IHC-P: 1-2 µg/ml
Reactivity:	Human, Mouse, Rat, Guinea Pig, Rabbit, Bovine, Zebrafish
Immunogen:	Synthetic peptide corresponding to amino acids 56-66 of human TIMP2 protein.
Sequence:	DSGNDIYGNPI
Host:	Rabbit
Clonality:	Monoclonal
Clone ID:	TIMP2/2488R
Isotype:	IgG
Conjugate:	Unconjugated
Purification:	Protein A/G chromatography.
Concentration:	200 µg/ml
Product Form:	Liquid
Formulation:	Supplied in 10mM Phosphate Buffered Saline with 0.05% BSA and 0.05% Sodium Azide.
Storage:	Shipped at 4°C. Upon delivery aliquot and store at -20°C. Avoid freeze / thaw cycles.
General Notes:	This monoclonal antibody is also available in a different formulation without BSA and Sodium Azide - Anti-TIMP2 Antibody [TIMP2/2488R] - BSA and Azide free (A253317).
Disclaimer:	This product is for research use only. It is not intended for diagnostic or therapeutic use.

Anti-TIMP2 Antibody [TIMP2/2488R] (A250137)

Images:



Immunohistochemical analysis of formalin-fixed, paraffin-embedded human placenta using Anti-TIMP2 Antibody [TIMP2/2488R].



SDS-PAGE analysis of Anti-TIMP2 Antibody [TIMP2/2488R] under non-reduced and reduced conditions; showing intact IgG and intact heavy and light chains, respectively. SDS-PAGE analysis confirms the integrity and purity of the antibody.