

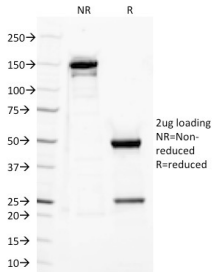
## Anti-TLR2 Antibody [TLR2/221] (A250149)

### Specifications:

Name:	Anti-TLR2 Antibody [TLR2/221]
Description:	Mouse monoclonal [TLR2/221] antibody to TLR2.
Specificity:	This antibody reacts with human Toll-like receptor 2 (TLR2). It is a member of the Toll-like receptor (TLR) family, which plays a fundamental role in pathogen recognition and activation of innate immunity. TLRs are highly conserved from <i>Drosophila</i> to humans and share structural and functional similarities. They recognize pathogen-associated molecular patterns (PAMPs) that are expressed on infectious agents, and mediate the production of cytokines necessary for the development of effective immunity. The various TLRs exhibit different patterns of expression. This gene is expressed most abundantly in peripheral blood leukocytes, and mediates host response to Gram-positive bacteria and yeast via stimulation of NF-kappaB.
Applications:	Functional Studies
Reactivity:	Human, Monkey, Canine
Immunogen:	Recombinant full-length human TLR2 protein.
Host:	Mouse
Clonality:	Monoclonal
Clone ID:	TLR2/221
Isotype:	IgG2a
Light Chains:	kappa
Conjugate:	Unconjugated
Purification:	Protein A/G chromatography.
Concentration:	200 µg/ml
Product Form:	Liquid
Formulation:	Supplied in 10mM Phosphate Buffered Saline with 0.05% BSA and 0.05% Sodium Azide.
Storage:	Shipped at 4°C. Upon delivery aliquot and store at -20°C. Avoid freeze / thaw cycles.
General Notes:	This monoclonal antibody is also available in a different formulation without BSA and Sodium Azide - Anti-TLR2 Antibody [TLR2/221] - BSA and Azide free (A253329).
Disclaimer:	This product is for research use only. It is not intended for diagnostic or therapeutic use.

## Anti-TLR2 Antibody [TLR2/221] (A250149)

### Images:



SDS-PAGE analysis of Anti-TLR2 Antibody [TLR2/221] under non-reduced and reduced conditions; showing intact IgG and intact heavy and light chains, respectively. SDS-PAGE analysis confirms the integrity and purity of the antibody.