

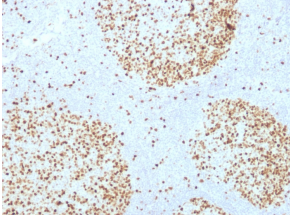
## Anti-Topoisomerase II alpha Antibody [TOP2A/1361] (A250168)

### Specifications:

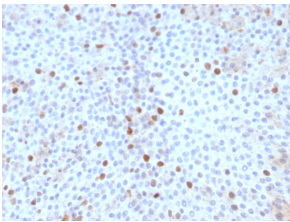
Name:	Anti-Topoisomerase II alpha Antibody [TOP2A/1361]
Description:	Mouse monoclonal [TOP2A/1361] antibody to Topoisomerase II alpha.
Applications:	IF, WB, IHC-P
Recommended Dilutions:	IF: 1-2 µg/ml, WB: 1-2 µg/ml, IHC-P: 1-2 µg/ml
Reactivity:	Human, Mouse
Immunogen:	Recombinant fragment, around amino acids 1352-1493, of human Topoisomerase II alpha protein.
Host:	Mouse
Clonality:	Monoclonal
Clone ID:	TOP2A/1361
Isotype:	IgG2b
Light Chains:	kappa
Conjugate:	Unconjugated
Purification:	Protein A/G chromatography.
Concentration:	200 µg/ml
Product Form:	Liquid
Formulation:	Supplied in 10mM Phosphate Buffered Saline with 0.05% BSA and 0.05% Sodium Azide.
Storage:	Shipped at 4°C. Upon delivery aliquot and store at -20°C. Avoid freeze / thaw cycles.
General Notes:	This monoclonal antibody is also available in a different formulation without BSA and Sodium Azide - Anti-Topoisomerase II alpha Antibody [TOP2A/1361] - BSA and Azide free (A253348).
Disclaimer:	This product is for research use only. It is not intended for diagnostic or therapeutic use.

# Anti-Topoisomerase II alpha Antibody [TOP2A/1361] (A250168)

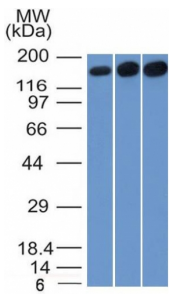
Images:



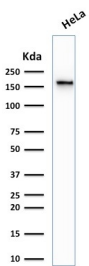
Immunohistochemical analysis of formalin-fixed, paraffin-embedded human tonsil using Anti-Topoisomerase II alpha Antibody [TOP2A/1361].



Immunohistochemical analysis of formalin-fixed, paraffin-embedded human bladder carcinoma using Anti-Topoisomerase II alpha Antibody [TOP2A/1361].



Western blot analysis of HepG2, HeLa, and 3T3 cell lysates using Anti-Topoisomerase II alpha Antibody [TOP2A/1361].



Western blot analysis of human HeLa cell lysate using Anti-Topoisomerase II alpha Antibody [TOP2A/1361].