

Anti-Von Willebrand Factor Antibody [VWF635] (A250321)

Specifications:

| | |
|------------------------|--|
| Name: | Anti-Von Willebrand Factor Antibody [VWF635] |
| Description: | Mouse monoclonal [VWF635] antibody to Von Willebrand Factor. |
| Specificity: | von Willebrand Factor (vWF) is a multimeric glycoprotein that is found in endothelial cells, plasma and platelets. It acts as a carrier protein for Factor VIII and promotes platelet adhesion and aggregation. vWF undergoes a variety of posttranslational modifications that influence the affinity and availability for Factor VIII, including cleavage of the propeptide and formation of N-terminal disulfide bonds. This antibody helps to establish the endothelial nature of some lesions of disputed histogenesis, e.g. Kaposi s sarcoma and cardiac myxoma. It is widely used for differentiating vascular lesions from those of other tissue differentiation within a panel of other vascular markers although not all tumors of endothelial differentiation contain this antigen. |
| Applications: | IP, Flow Cytometry, IF, WB, IHC-P |
| Recommended Dilutions: | IP: 0.5-1 µg / 500 µg protein lysate, Flow Cytometry: 1-2 µg/million cells, IF: 1-2 µg/ml, WB: 1-2 µg/ml, IHC-P: 1-2 µg/ml |
| Reactivity: | Human |
| Immunogen: | Recombinant fragment, around amino acids 845-949, of human vWF protein. The exact sequence is proprietary. |
| Host: | Mouse |
| Clonality: | Monoclonal |
| Clone ID: | VWF635 |
| Isotype: | IgG1 |
| Light Chains: | kappa |
| Conjugate: | Unconjugated |
| Purification: | Protein A/G chromatography. |
| Concentration: | 200 µg/ml |
| Product Form: | Liquid |
| Formulation: | Supplied in 10mM Phosphate Buffered Saline with 0.05% BSA and 0.05% Sodium Azide. |
| Storage: | Shipped at 4°C. Upon delivery aliquot and store at -20°C. Avoid freeze / thaw cycles. |

Anti-Von Willebrand Factor Antibody [VWF635] (A250321)

Specifications continued:

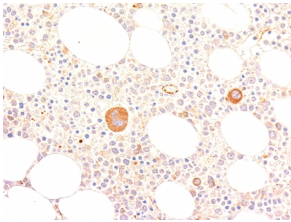
General Notes:

This monoclonal antibody is also available in a different formulation without BSA and Sodium Azide - Anti-Von Willebrand Factor Antibody [VWF635] - BSA and Azide free (A253501).

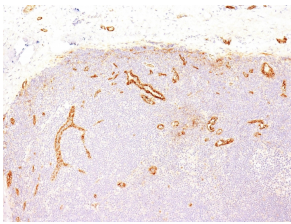
Disclaimer:

This product is for research use only. It is not intended for diagnostic or therapeutic use.

Images:



Immunohistochemical analysis of formalin-fixed, paraffin-embedded human bone marrow using Anti-Von Willebrand Factor Antibody [VWF635].



Immunohistochemical analysis of formalin-fixed, paraffin-embedded human tonsil using Anti-Von Willebrand Factor Antibody [VWF635].