

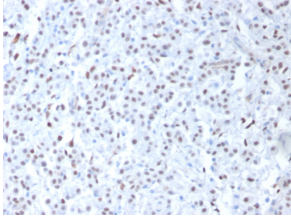
Anti-Wilms Tumor Protein Antibody [6F-H2] (A250330)

Specifications:

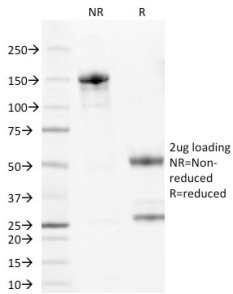
Name:	Anti-Wilms Tumor Protein Antibody [6F-H2]
Description:	Mouse monoclonal [6F-H2] antibody to Wilms Tumor Protein.
Applications:	IHC-P
Recommended Dilutions:	IHC-P: 1-2 µg/ml
Reactivity:	Human, Rat
Cross Reactivity:	This antibody weekly cross reacts with Mouse.
Immunogen:	Recombinant fragment, corresponding to amino acids 1-181, of human WT1 protein.
Host:	Mouse
Clonality:	Monoclonal
Clone ID:	6F-H2
Isotype:	IgG1
Light Chains:	kappa
Conjugate:	Unconjugated
Purification:	Protein A/G chromatography.
Concentration:	200 µg/ml
Product Form:	Liquid
Formulation:	Supplied in 10mM Phosphate Buffered Saline with 0.05% BSA and 0.05% Sodium Azide.
Storage:	Shipped at 4°C. Upon delivery aliquot and store at -20°C. Avoid freeze / thaw cycles.
General Notes:	This monoclonal antibody is also available in a different formulation without BSA and Sodium Azide - Anti-Wilms Tumor Protein Antibody [6F-H2] - BSA and Azide free (A253510).
Disclaimer:	This product is for research use only. It is not intended for diagnostic or therapeutic use.

Anti-Wilms Tumor Protein Antibody [6F-H2] (A250330)

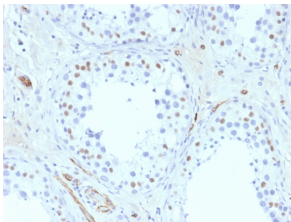
Images:



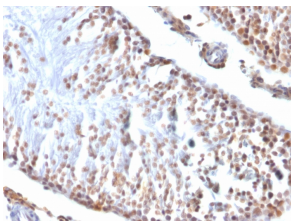
Immunohistochemical analysis of formalin-fixed, paraffin-embedded human mesothelioma using Anti-Wilms tumor Protein Antibody [6F-H2].



SDS-PAGE analysis of Anti-Wilms Tumor Protein Antibody [6F-H2] under non-reduced and reduced conditions; showing intact IgG and intact heavy and light chains, respectively. SDS-PAGE analysis confirms the integrity and purity of the antibody.



Immunohistochemical analysis of formalin-fixed, paraffin-embedded human testis using Anti-Wilms tumor Protein Antibody [6F-H2].



Immunohistochemical analysis of formalin-fixed, paraffin-embedded rat testis using Anti-Wilms tumor Protein Antibody [6F-H2].