

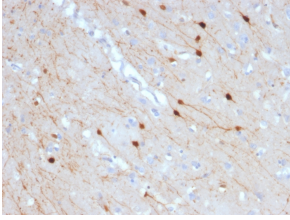
Anti-Calretinin Antibody [CALB2/2685] (A250374)

Specifications:

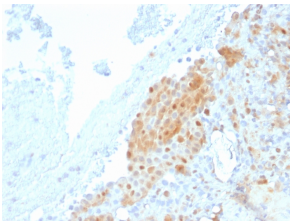
| | |
|------------------------|--|
| Name: | Anti-Calretinin Antibody [CALB2/2685] |
| Description: | Mouse monoclonal [CALB2/2685] antibody to Calretinin. |
| Applications: | IHC-P |
| Recommended Dilutions: | IHC-P: 1-2 µg/ml |
| Reactivity: | Human |
| Immunogen: | Recombinant fragment, around amino acids 23-242, of human Calretinin protein. The exact sequence is proprietary. |
| Host: | Mouse |
| Clonality: | Monoclonal |
| Clone ID: | CALB2/2685 |
| Isotype: | IgG1 |
| Light Chains: | kappa |
| Conjugate: | Unconjugated |
| Purification: | Protein A chromatography. |
| Concentration: | 200 µg/ml |
| Product Form: | Liquid |
| Formulation: | Supplied in 10mM Phosphate Buffered Saline with 0.05% BSA and 0.05% Sodium Azide. |
| Storage: | Shipped at 4°C. Upon delivery aliquot and store at -20°C. Avoid freeze / thaw cycles. |
| General Notes: | This monoclonal antibody is also available in a different formulation without BSA and Sodium Azide - Anti-Calretinin Antibody [CALB2/2685] - BSA and Azide free (A253554). |
| Disclaimer: | This product is for research use only. It is not intended for diagnostic or therapeutic use. |

Anti-Calretinin Antibody [CALB2/2685] (A250374)

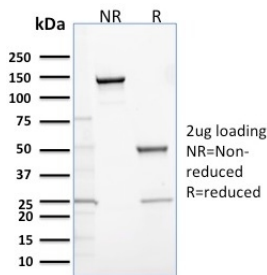
Images:



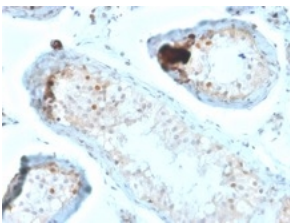
Immunohistochemical analysis of formalin-fixed, paraffin-embedded human cerebellum using Anti-Calretinin Antibody [CALB2/2685].



Immunohistochemical analysis of formalin-fixed, paraffin-embedded human mesothelioma using Anti-Calretinin Antibody [CALB2/2685].



SDS-PAGE analysis of Anti-Calretinin Antibody [CALB2/2685] under non-reduced and reduced conditions; showing intact IgG and intact heavy and light chains, respectively. SDS-PAGE analysis confirms the integrity and purity of the antibody.



Immunohistochemical analysis of formalin-fixed, paraffin-embedded human testicular carcinoma using Anti-Calretinin Antibody [CALB2/2685].