

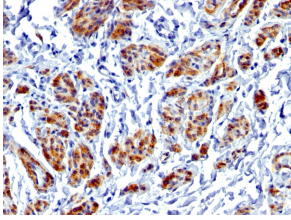
Anti-Caldesmon Antibody [CALD1/1424R] (A250385)

Specifications:

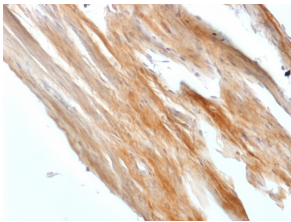
Name:	Anti-Caldesmon Antibody [CALD1/1424R]
Description:	Recombinant rabbit monoclonal [CALD1/1424R] antibody to Caldesmon.
Specificity:	This antibody recognizes a protein of 150kDa, which is identified as the high molecular weight variant of Caldesmon. Two closely related variants of human caldesmon have been identified which are different in their electrophoretic mobility and cellular distribution. The h-caldesmon variant (120 150kDa) is predominantly expressed in smooth muscle whereas l-caldesmon (70 80kDa) is found in non- muscle tissue and cells. Neither of the two variants has been detected in skeletal muscle. This antibody recognizes only the 150kDa variant (h-caldesmon) in Western blots of human aortic media extracts and is unreactive with fibroblast extracts from cultivated human foreskin. Caldesmon is a developmentally regulated protein involved in smooth muscle and non-muscle contraction.
Applications:	WB, IHC
Recommended Dilutions:	WB: 1-2 µg/ml, IHC-P: 1-2 µg/ml
Reactivity:	Human, Rat
Immunogen:	Recombinant full-length human CALD1 protein.
Host:	Rabbit
Clonality:	Monoclonal
Clone ID:	CALD1/1424R
Isotype:	IgG
Conjugate:	Unconjugated
Purification:	Protein A/G chromatography.
Concentration:	200 µg/ml
Product Form:	Liquid
Formulation:	Supplied in 10mM Phosphate Buffered Saline with 0.05% BSA and 0.05% Sodium Azide.
Storage:	Shipped at 4°C. Upon delivery aliquot and store at -20°C. Avoid freeze / thaw cycles.
General Notes:	This monoclonal antibody is also available in a different formulation without BSA and Sodium Azide - Anti-Caldesmon Antibody [CALD1/1424R] - BSA and Azide free (A253565).
Disclaimer:	This product is for research use only. It is not intended for diagnostic or therapeutic use.

Anti-Caldesmon Antibody [CALD1/1424R] (A250385)

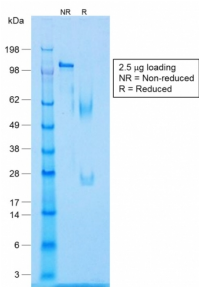
Images:



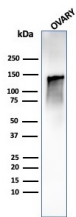
Immunohistochemical analysis of formalin-fixed, paraffin-embedded human uterus using Anti-Caldesmon Antibody [CALD1/1424R].



Immunohistochemical analysis of formalin-fixed, paraffin-embedded rat uterus using Anti-Caldesmon Antibody [CALD1/1424R].



SDS-PAGE analysis of Anti-Caldesmon Antibody [CALD1/1424R] under non-reduced and reduced conditions; showing intact IgG and intact heavy and light chains, respectively. SDS-PAGE analysis confirms the integrity and purity of the antibody.



Western blot analysis of human ovary tissue lysate using Anti-Caldesmon Antibody [CALD1/1424R].