

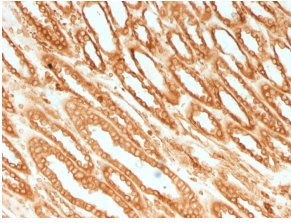
Anti-Calnexin Antibody [CANX/1541] (A250400)

Specifications:

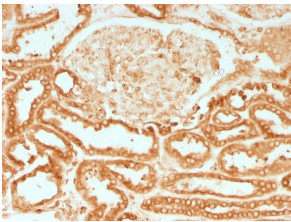
Name:	Anti-Calnexin Antibody [CANX/1541]
Description:	Mouse monoclonal [CANX/1541] antibody to Calnexin.
Applications:	ELISA, WB, IHC-P
Recommended Dilutions:	WB: 1-2 µg/ml, IHC-P: 1-2 µg/ml
Reactivity:	Human
Cross Reactivity:	This antibody does not cross react with Rat.
Immunogen:	Recombinant N terminal fragment, around amino acids 1-300, of human Calnexin protein. The exact sequence is proprietary.
Host:	Mouse
Clonality:	Monoclonal
Clone ID:	CANX/1541
Isotype:	IgG2b
Light Chains:	kappa
Conjugate:	Unconjugated
Purification:	Protein A/G chromatography.
Concentration:	200 µg/ml
Product Form:	Liquid
Formulation:	Supplied in 10mM Phosphate Buffered Saline with 0.05% BSA and 0.05% Sodium Azide.
Storage:	Shipped at 4°C. Upon delivery aliquot and store at -20°C. Avoid freeze / thaw cycles.
General Notes:	This monoclonal antibody is also available in a different formulation without BSA and Sodium Azide - Anti-Calnexin Antibody [CANX/1541] - BSA and Azide free (A253580).
Disclaimer:	This product is for research use only. It is not intended for diagnostic or therapeutic use.

Anti-Calnexin Antibody [CANX/1541] (A250400)

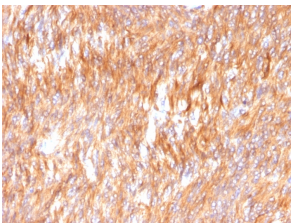
Images:



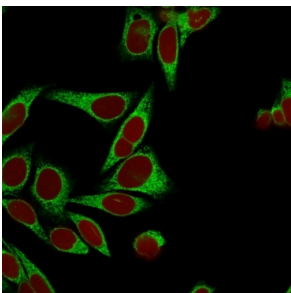
Immunohistochemical analysis of formalin-fixed, paraffin-embedded human renal cell carcinoma using Anti-Calnexin Antibody [CANX/1541].



Immunohistochemical analysis of formalin-fixed, paraffin-embedded human renal cell carcinoma using Anti-Calnexin Antibody [CANX/1541].



Immunohistochemical analysis of formalin-fixed, paraffin-embedded human small intestinal carcinoma using Anti-Calnexin Antibody [CANX/1541].



Immunofluorescent analysis of HeLa cells stained with Anti-Calnexin Antibody [CANX/1541] (CF® 488) (Green). Nuclear counterstain is RedDot.