

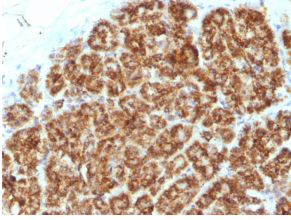
## Anti-MAML2 Antibody [MAML2/1302] (A250416)

### Specifications:

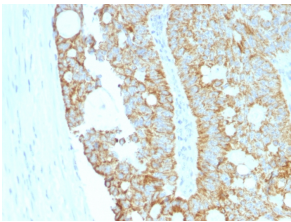
Name:	Anti-MAML2 Antibody [MAML2/1302]
Description:	Mouse monoclonal [MAML2/1302] antibody to MAML2.
Applications:	Flow Cytometry, IF, WB, IHC-P
Recommended Dilutions:	Flow Cytometry: 1-2 µg/million cells, IF: 1-2 µg/ml, WB: 1-2 µg/ml, IHC-P: 1-2 µg/ml
Reactivity:	Human
Immunogen:	Recombinant human MAML2 fragment.
Host:	Mouse
Clonality:	Monoclonal
Clone ID:	MAML2/1302
Isotype:	IgG2a
Light Chains:	kappa
Conjugate:	Unconjugated
Purification:	Protein A/G chromatography.
Concentration:	200 µg/ml
Product Form:	Liquid
Formulation:	Supplied in 10mM Phosphate Buffered Saline with 0.05% BSA and 0.05% Sodium Azide.
Storage:	Shipped at 4°C. Upon delivery aliquot and store at -20°C. Avoid freeze / thaw cycles.
General Notes:	This monoclonal antibody is also available in a different formulation without BSA and Sodium Azide - Anti-MAML2 Antibody [MAML2/1302] - BSA and Azide free (A253596).
Disclaimer:	This product is for research use only. It is not intended for diagnostic or therapeutic use.

## Anti-MAML2 Antibody [MAML2/1302] (A250416)

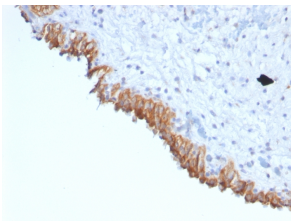
### Images:



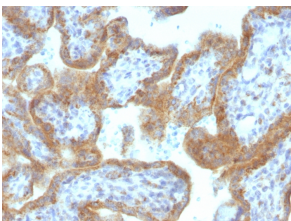
Immunohistochemical analysis of formalin-fixed, paraffin-embedded human pancreas using Anti-MAML2 Antibody [MAML2/1302].



Immunohistochemical analysis of formalin-fixed, paraffin-embedded human colon carcinoma using Anti-MAML2 Antibody [MAML2/1302].



Immunohistochemical analysis of formalin-fixed, paraffin-embedded human bladder carcinoma using Anti-MAML2 Antibody [MAML2/1302].



Immunohistochemical analysis of formalin-fixed, paraffin-embedded human placenta using Anti-MAML2 Antibody [MAML2/1302].