

## Anti-CD3 epsilon Antibody [RIV9] (A250504)

### Specifications:

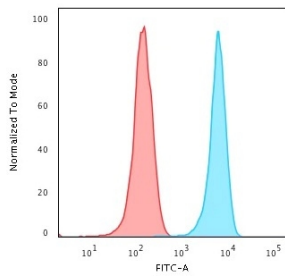
Name:	Anti-CD3 epsilon Antibody [RIV9]
Description:	Mouse monoclonal [RIV9] antibody to CD3 epsilon.
Specificity:	This antibody recognizes the epsilon-chain of CD3, which consists of five different polypeptide chains (designated as gamma, delta, epsilon, zeta, and eta) with MW ranging from 16-28kDa. It is found on all mature T-lymphocytes, NK, T-cells, and some thymocytes. CD3, also known as T3, is a member of the immunoglobulin superfamily that plays a role in antigen recognition, signal transduction, and T cell activation. It is expressed, typically at high levels, on peripheral T cells and majority of T cell neoplasms. Thymocytes express CD3 at different level on the cell surface in the course of differentiation and, in cortical thymus, CD3 is predominantly Intracytoplasmic. This MAb is particularly useful for induction of T cell activation in vitro and in vivo due to its unusual IgG3 isotype.
Applications:	Functional Studies, Flow Cytometry, IF
Recommended Dilutions:	Flow Cytometry: 1-2 µg/million cells, IF: 1-2 µg/ml
Reactivity:	Human, Mouse, Rat
Immunogen:	Human peripheral lymphocytes.
Host:	Mouse
Clonality:	Monoclonal
Clone ID:	RIV9
Isotype:	IgG3
Light Chains:	kappa
Conjugate:	Unconjugated
Purification:	Protein A chromatography.
Concentration:	200 µg/ml
Product Form:	Liquid
Formulation:	Supplied in 10mM Phosphate Buffered Saline with 0.05% BSA and 0.05% Sodium Azide.
Storage:	Shipped at 4°C. Store at 4°C.
General Notes:	This monoclonal antibody is also available in a different formulation without BSA and Sodium Azide - Anti-CD3 epsilon Antibody [RIV9] - BSA and Azide free (A253684).

# Anti-CD3 epsilon Antibody [RIV9] (A250504)

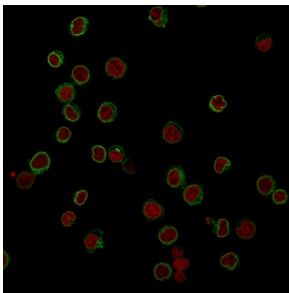
## Specifications continued:

**Disclaimer:** This product is for research use only. It is not intended for diagnostic or therapeutic use.

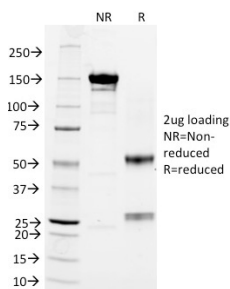
## Images:



Flow cytometric analysis of Jurkat cells using Anti-CD3 epsilon Antibody [RIV9] followed by Goat Anti-Mouse IgG (CF® 488) (Blue). Isotype Control (Red).



Immunofluorescent analysis of Jurkat cells stained with Anti-CD3 epsilon Antibody [RIV9] followed by Goat Anti-Mouse IgG (CF® 488) (Green). The nuclear counterstain is RedDot (Red).



SDS-PAGE analysis of Anti-CD3 epsilon Antibody [RIV9] under non-reduced and reduced conditions; showing intact IgG and intact heavy and light chains, respectively. SDS-PAGE analysis confirms the integrity and purity of the antibody.