

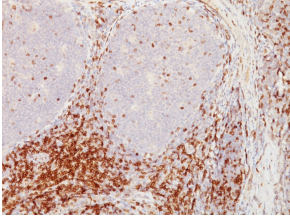
Anti-CD5 Antibody [CD5/54/F6] (A250530)

Specifications:

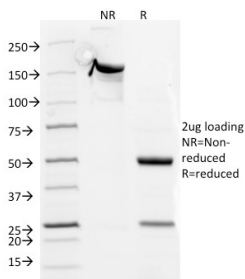
Name:	Anti-CD5 Antibody [CD5/54/F6]
Description:	Mouse monoclonal [CD5/54/F6] antibody to CD5.
Applications:	IHC-P
Recommended Dilutions:	IHC-P: 1-2 µg/ml
Reactivity:	Human, Monkey, Horse, Porcine, Rabbit, Bovine, Rat, Guinea Pig, Chicken
Immunogen:	A synthetic peptide from the intracellular region of human CD5.
Host:	Mouse
Clonality:	Monoclonal
Clone ID:	CD5/54/F6
Isotype:	IgG1
Light Chains:	kappa
Conjugate:	Unconjugated
Purification:	Protein A/G chromatography.
Concentration:	200 µg/ml
Product Form:	Liquid
Formulation:	Supplied in 10mM Phosphate Buffered Saline with 0.05% BSA and 0.05% Sodium Azide.
Storage:	Shipped at 4°C. Upon delivery aliquot and store at -20°C. Avoid freeze / thaw cycles.
General Notes:	This monoclonal antibody is also available in a different formulation without BSA and Sodium Azide - Anti-CD5 Antibody [CD5/54/F6] - BSA and Azide free (A253710).
Disclaimer:	This product is for research use only. It is not intended for diagnostic or therapeutic use.

Anti-CD5 Antibody [CD5/54/F6] (A250530)

Images:



Immunohistochemical analysis of formalin-fixed, paraffin-embedded human tonsil using Anti-CD5 Antibody [CD5/54/F6].



SDS-PAGE analysis of Anti-CD5 Antibody [CD5/54/F6] under non-reduced and reduced conditions; showing intact IgG and intact heavy and light chains, respectively. SDS-PAGE analysis confirms the integrity and purity of the antibody.