

Anti-CD163 Antibody [M130/1210] (A250603)

Specifications:

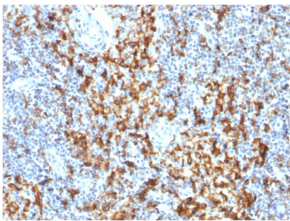
| | |
|------------------------|--|
| Name: | Anti-CD163 Antibody [M130/1210] |
| Description: | Mouse monoclonal [M130/1210] antibody to CD163. |
| Specificity: | This antibody recognizes a protein of 140kDa, identified as CD163. It has been identified as an acute phase-regulated transmembrane protein whose function is to mediate the endocytosis of haptoglobin-hemoglobin complexes. This receptor is expressed on the surface of monocytes with low expression and on tissue macrophages, histiocytes with high expression. Staining with anti-CD163 has been helpful to distinguish synovial macrophages from synovial intimal fibroblasts in rheumatoid arthritis, where its specificity for macrophages was found to be superior to that of anti-CD68. Increased levels of CD163 were also detected in patients with microbial infections and myelomonocytic leukemias. Anti-CD163 is of considerable value for selective identification of monocytes and macrophages at a certain stage of differentiation and is suitable for diagnosing myelomonocytic or monocytic leukaemia and neoplasms of true histiocytic origin. CD163 is positive in skin (histiocytes), gut, Kupffer cells, a few alveolar macrophages, macrophages in the placenta, and in macrophages in inflamed tissues including tumor tissue. |
| Applications: | WB, IHC-P |
| Recommended Dilutions: | WB: 1-2 µg/ml, IHC-P: 1-2 µg/ml |
| Reactivity: | Human |
| Immunogen: | Recombinant fragment, around amino acids 43-196, of human CD163 protein. The exact sequence is proprietary. |
| Host: | Mouse |
| Clonality: | Monoclonal |
| Clone ID: | M130/1210 |
| Isotype: | IgG2b |
| Light Chains: | kappa |
| Conjugate: | Unconjugated |
| Purification: | Protein A/G chromatography. |
| Concentration: | 200 µg/ml |
| Product Form: | Liquid |
| Formulation: | Supplied in 10mM Phosphate Buffered Saline with 0.05% BSA and 0.05% Sodium Azide. |

Anti-CD163 Antibody [M130/1210] (A250603)

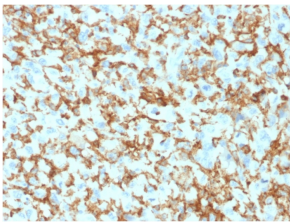
Specifications continued:

| | |
|----------------|--|
| Storage: | Shipped at 4°C. Upon delivery aliquot and store at -20°C. Avoid freeze / thaw cycles. |
| General Notes: | This monoclonal antibody is also available in a different formulation without BSA and Sodium Azide - Anti-CD163 Antibody [M130/1210] - BSA and Azide free (A253783). |
| Disclaimer: | This product is for research use only. It is not intended for diagnostic or therapeutic use. |

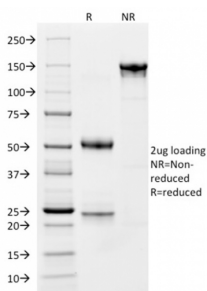
Images:



Immunohistochemical analysis of formalin-fixed, paraffin-embedded human lymph node using Anti-CD163 Antibody [M130/1210].



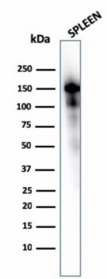
Immunohistochemical analysis of formalin-fixed, paraffin-embedded human histiocytoma using Anti-CD163 Antibody [M130/1210].



SDS-PAGE analysis of Anti-CD163 Antibody [M130/1210] under non-reduced and reduced conditions; showing intact IgG and intact heavy and light chains, respectively. SDS-PAGE analysis confirms the integrity and purity of the antibody.

Anti-CD163 Antibody [M130/1210] (A250603)

Images continued:



Western blot analysis of spleen tissue lysate using Anti-CD163 Antibody [M130/1210].