

Anti-ATG5 Antibody [ATG5/2492] (A250661)

Specifications:

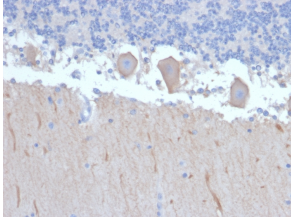
Name:	Anti-ATG5 Antibody [ATG5/2492]
Description:	Mouse monoclonal [ATG5/2492] antibody to ATG5.
Specificity:	The protein encoded by this gene, in combination with autophagy protein 12, functions as an E1-like activating enzyme in a ubiquitin-like conjugating system. The encoded protein is involved in several cellular processes, including autophagic vesicle formation, mitochondrial quality control after oxidative damage, negative regulation of the innate antiviral immune response, lymphocyte development and proliferation, MHC II antigen presentation, adipocyte differentiation, and apoptosis. The ATG5 protein is essential for autophagy; a process that is usually beneficial for cells to self-degrade their own components when they are no longer useful.
Applications:	ELISA, WB, IHC-P
Recommended Dilutions:	ELISA: 1-5 µg/ml, WB: 1-2 µg/ml, IHC-P: 1-2 µg/ml
Reactivity:	Human
Immunogen:	Recombinant fragment, around amino acids 1-119, of human ATG5 protein. The exact sequence is proprietary.
Host:	Mouse
Clonality:	Monoclonal
Clone ID:	ATG5/2492
Isotype:	IgG1
Light Chains:	kappa
Conjugate:	Unconjugated
Purification:	Protein A/G chromatography.
Concentration:	200 µg/ml
Product Form:	Liquid
Formulation:	Supplied in 10mM Phosphate Buffered Saline with 0.05% BSA and 0.05% Sodium Azide.
Storage:	Shipped at 4°C. Upon delivery aliquot and store at -20°C. Avoid freeze / thaw cycles.
General Notes:	This monoclonal antibody is also available in a different formulation without BSA and Sodium Azide - Anti-ATG5 Antibody [ATG5/2492] - BSA and Azide free (A253841).

Anti-ATG5 Antibody [ATG5/2492] (A250661)

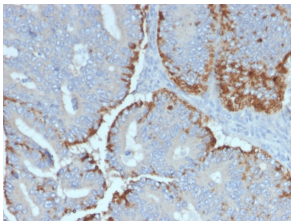
Specifications continued:

Disclaimer: This product is for research use only. It is not intended for diagnostic or therapeutic use.

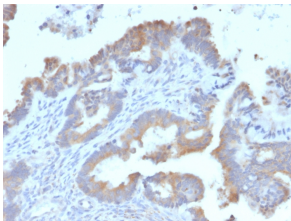
Images:



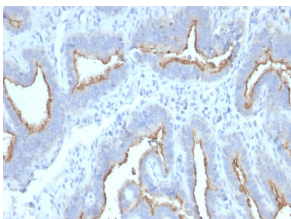
Immunohistochemical analysis of formalin-fixed, paraffin-embedded human brain using Anti-ATG5 Antibody [ATG5/2492].



Immunohistochemical analysis of formalin-fixed, paraffin-embedded human colon carcinoma using Anti-ATG5 Antibody [ATG5/2492].



Immunohistochemical analysis of formalin-fixed, paraffin-embedded human endometrial carcinoma using Anti-ATG5 Antibody [ATG5/2492].



Immunohistochemical analysis of formalin-fixed, paraffin-embedded human ovarian carcinoma using Anti-ATG5 Antibody [ATG5/2492].