

Anti-E Cadherin Antibody [CDH1/2208R] (A250830)

Specifications:

Name:	Anti-E Cadherin Antibody [CDH1/2208R]
Description:	Recombinant rabbit monoclonal [CDH1/2208R] antibody to E Cadherin.
Specificity:	This antibody recognizes a protein of 120-80kDa, identified as E-cadherin. Cadherins comprise a family of Ca ²⁺ -dependent adhesion molecules that function to mediate cell-cell binding critical to the maintenance of tissue structure and morphogenesis. The classical cadherins, E-, N- and P-cadherin, consist of large extracellular domains characterized by a series of five homologous NH ₂ terminal repeats. The relatively short intracellular domains interact with a variety of cytoplasmic proteins, such as -catenin, to regulate cadherin function. E-cadherin plays an important role in epithelial cell adhesion. A decreased expression of E-cadherin is associated with metastatic potential and poor prognosis in breast cancer, prostate and esophageal cancer. In combination with p120 Catenin, it is useful for the differentiation between ductal (E-cadherin +) and lobular (E-cadherin -) breast carcinomas. It may also help in diagnosis of mesothelioma.
Applications:	Flow Cytometry, IF, WB, IHC-P
Recommended Dilutions:	Flow Cytometry: 1-2 µg/million cells, IF: 1-2 µg/ml, WB: 1-2 µg/ml, IHC-P: 1-2 µg/ml
Reactivity:	Human
Cross Reactivity:	This antibody does not cross react with Mouse or Rat.
Immunogen:	Recombinant full-length human E Cadherin protein.
Host:	Rabbit
Clonality:	Monoclonal
Clone ID:	CDH1/2208R
Isotype:	IgG
Conjugate:	Unconjugated
Purification:	Protein A/G chromatography.
Concentration:	200 µg/ml
Product Form:	Liquid
Formulation:	Supplied in 10mM Phosphate Buffered Saline with 0.05% BSA and 0.05% Sodium Azide.
Storage:	Shipped at 4°C. Upon delivery aliquot and store at -20°C. Avoid freeze / thaw cycles.

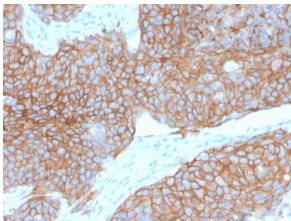
Anti-E Cadherin Antibody [CDH1/2208R] (A250830)

Specifications continued:

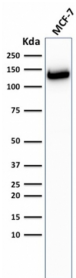
General Notes: This monoclonal antibody is also available in a different formulation without BSA and Sodium Azide - Anti-E Cadherin Antibody [CDH1/2208R] - BSA and Azide free (A254010).

Disclaimer: This product is for research use only. It is not intended for diagnostic or therapeutic use.

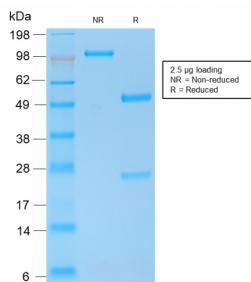
Images:



Immunohistochemical analysis of formalin-fixed, paraffin-embedded human colon carcinoma using Anti-E Cadherin Antibody [CDH1/2208R].



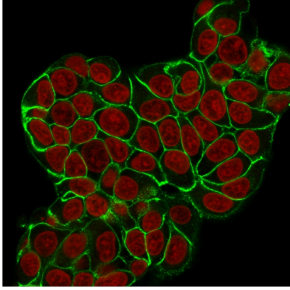
Western blot analysis of MCF-7 cell lysate using Anti-E Cadherin Antibody [CDH1/2208R].



SDS-PAGE analysis of Anti-E Cadherin Antibody [CDH1/2208R] under non-reduced and reduced conditions; showing intact IgG and intact heavy and light chains, respectively. SDS-PAGE analysis confirms the integrity and purity of the antibody.

Anti-E Cadherin Antibody [CDH1/2208R] (A250830)

Images continued:



Immunofluorescent analysis of MCF-7 cells stained with Anti-E Cadherin Antibody [CDH1/2208R] followed by Goat Anti-Mouse IgG (CF® 488) (Green). The nuclear counterstain is RedDot (Red).