

Anti-Golgi Complex Antibody [371-4] (A250842)

Specifications:

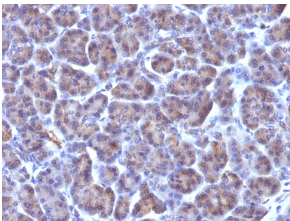
Name:	Anti-Golgi Complex Antibody [371-4]
Description:	Mouse monoclonal [371-4] antibody to Golgi Complex.
Specificity:	This antibody recognizes an antigen associated with the Golgi complex in human cells only. It can be used to stain the Golgi complex in cell or tissue preparations and can be used as a Golgi marker in subcellular fractions. It produces a diffuse staining pattern of the Golgi zone in normal and malignant cells. This antibody is an excellent marker for human cells in xenographic model research. It reacts specifically with human cells. The Golgi apparatus is an organelle present in all eukaryotic cells that forms a part of the endomembrane system. The primary function of the Golgi apparatus is to process and package macromolecules synthesized by the cell for exocytosis or use within the cell. The Golgi is made up of a stack of flattened, membrane-bound sacs known as cisternae, with three functional regions: the cis face, medial region and trans face. Each region consists of various enzymes that selectively modify the macromolecules passing through them, depending on where they are destined to reside. Several spherical vesicles that have budded off of the Golgi are present surrounding the main cisternae.
Applications:	Flow Cytometry, IF, WB, ICC, IHC-P
Recommended Dilutions:	Flow Cytometry: 0.5-1 µg/million cells, IF: 1-2 µg/ml, WB: 1-2 µg/ml, ICC: 1-2 µg/ml, IHC-P: 1-2 µg/ml
Reactivity:	Human
Cross Reactivity:	This antibody does not cross react with Mouse or Rat.
Immunogen:	SU-DHL-1 large cell lymphoma cells.
Host:	Mouse
Clonality:	Monoclonal
Clone ID:	371-4
Isotype:	IgG1
Light Chains:	kappa
Conjugate:	Unconjugated
Purification:	Protein A/G chromatography.
Concentration:	200 µg/ml
Product Form:	Liquid
Formulation:	Supplied in 10mM Phosphate Buffered Saline with 0.05% BSA and 0.05% Sodium Azide.

Anti-Golgi Complex Antibody [371-4] (A250842)

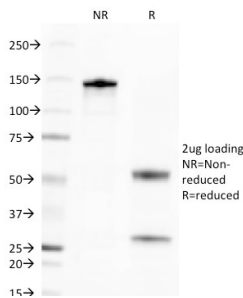
Specifications continued:

Storage:	Shipped at 4°C. Upon delivery aliquot and store at -20°C. Avoid freeze / thaw cycles.
General Notes:	This monoclonal antibody is also available in a different formulation without BSA and Sodium Azide - Anti-Golgi Complex Antibody [371-4] - BSA and Azide free (A254022).
Disclaimer:	This product is for research use only. It is not intended for diagnostic or therapeutic use.

Images:



Immunohistochemical analysis of formalin-fixed, paraffin-embedded human pancreas using Anti-Golgi Complex Antibody [371-4].



SDS-PAGE analysis of Anti-Golgi Complex Antibody [371-4] under non-reduced and reduced conditions; showing intact IgG and intact heavy and light chains, respectively. SDS-PAGE analysis confirms the integrity and purity of the antibody.