

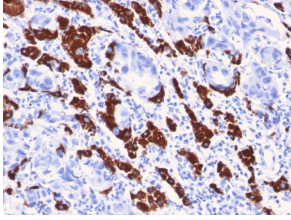
## Anti-Hepatocyte Specific Antigen Antibody [OCH1E5] (A250888)

### Specifications:

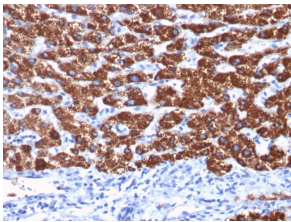
Name:	Anti-Hepatocyte Specific Antigen Antibody [OCH1E5]
Description:	Mouse monoclonal [OCH1E5] antibody to Hepatocyte Specific Antigen.
Applications:	IF, IHC-P
Recommended Dilutions:	IF: 1-2 µg/ml, IHC-P: 1-2 µg/ml
Reactivity:	Human, Canine
Immunogen:	Extract of a formalin-fixed, rejected-allograft of a human liver.
Host:	Mouse
Clonality:	Monoclonal
Clone ID:	OCH1E5
Isotype:	IgG1
Light Chains:	kappa
Conjugate:	Unconjugated
Purification:	Protein A/G chromatography.
Concentration:	200 µg/ml
Product Form:	Liquid
Formulation:	Supplied in 10mM Phosphate Buffered Saline with 0.05% BSA and 0.05% Sodium Azide.
Storage:	Shipped at 4°C. Upon delivery aliquot and store at -20°C. Avoid freeze / thaw cycles.
General Notes:	This monoclonal antibody is also available in a different formulation without BSA and Sodium Azide - Anti-Hepatocyte Specific Antigen Antibody [OCH1E5] - BSA and Azide free (A254068).
Disclaimer:	This product is for research use only. It is not intended for diagnostic or therapeutic use.

## Anti-Hepatocyte Specific Antigen Antibody [OCH1E5] (A250888)

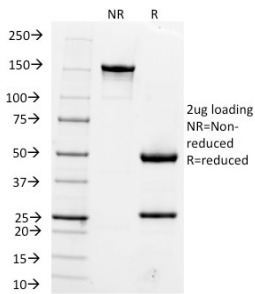
### Images:



Immunohistochemical analysis of formalin-fixed, paraffin-embedded human liver using Anti-Hepatocyte Specific Antigen Antibody [OCH1E5].



Immunohistochemical analysis of formalin-fixed, paraffin-embedded human hepatocellular carcinoma using Anti-Hepatocyte Specific Antigen Antibody [OCH1E5].



SDS-PAGE analysis of Anti-Hepatocyte Specific Antigen Antibody [OCH1E5] under non-reduced and reduced conditions; showing intact IgG and intact heavy and light chains, respectively. SDS-PAGE analysis confirms the integrity and purity of the antibody.